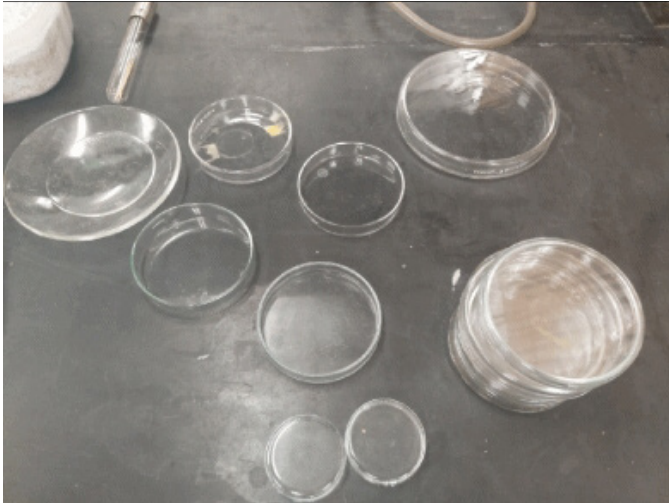


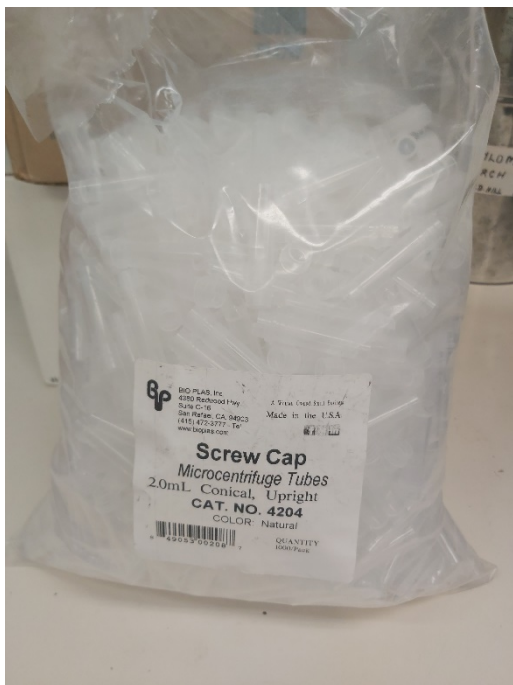
Glass petri dishes, Glass lenses



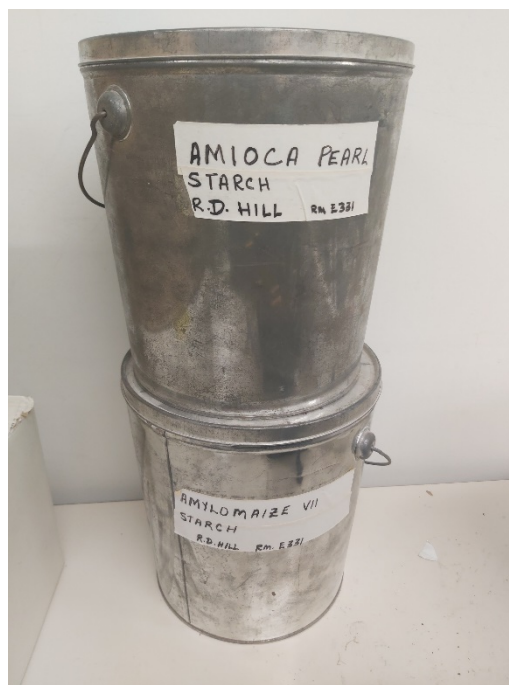
Disposable culture tubes, flint glass



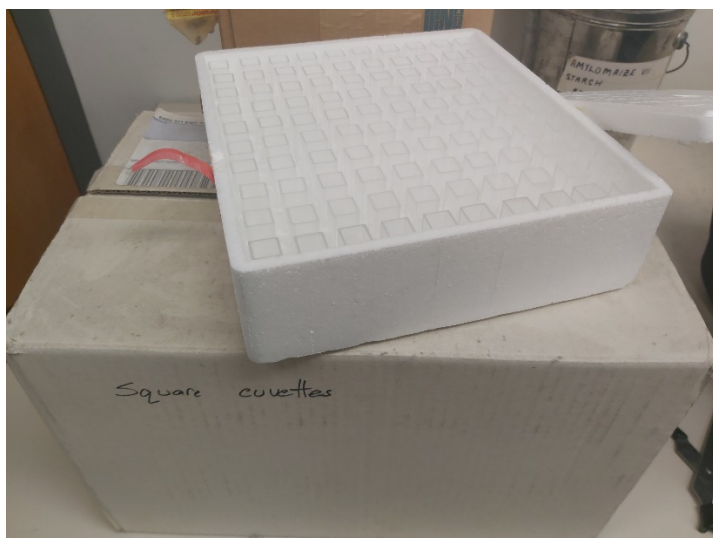
Microcentrifuge tubes, screw cap



Bulk Starches, Amioca Pearl & Amylomaize VII



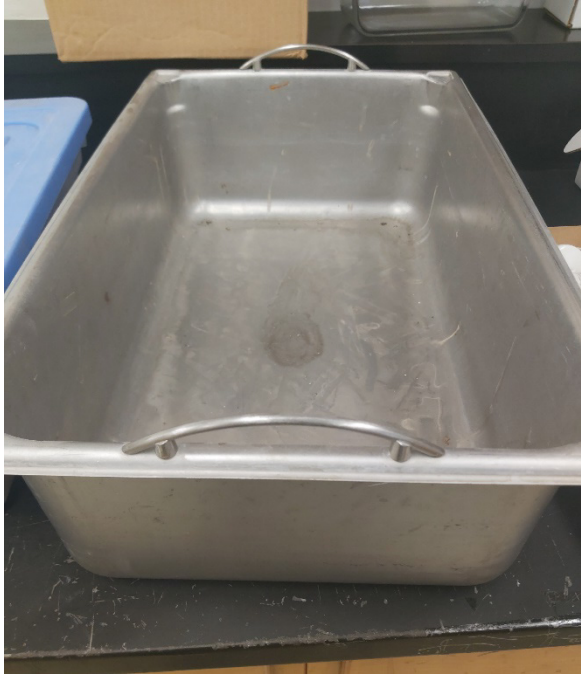
Square plastic cuvettes



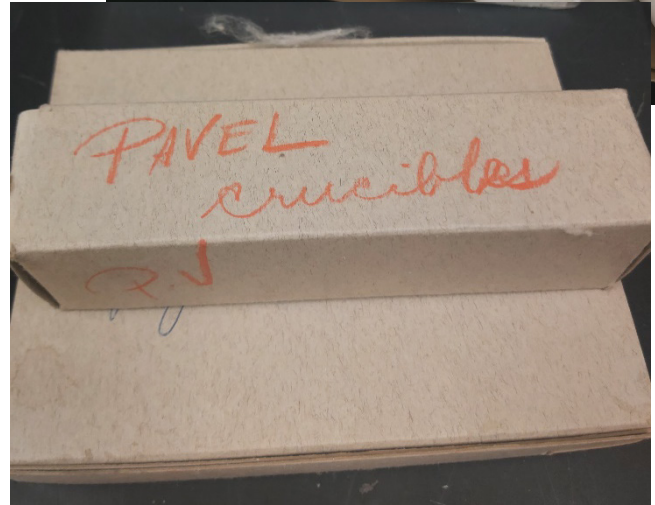
Misc. chemistry hardware



Stainless steel basin

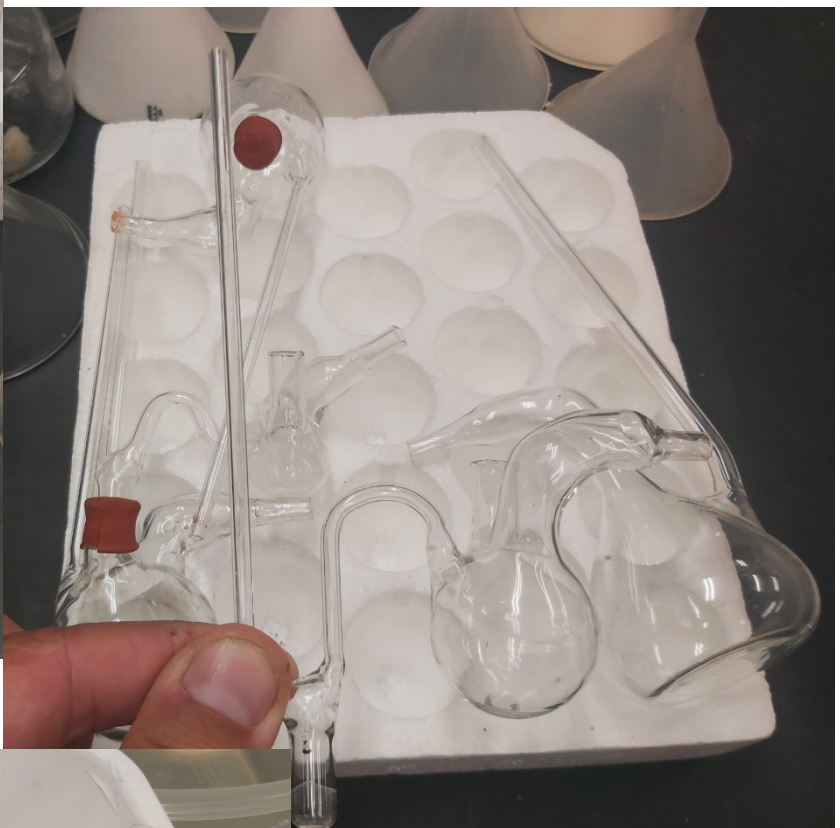


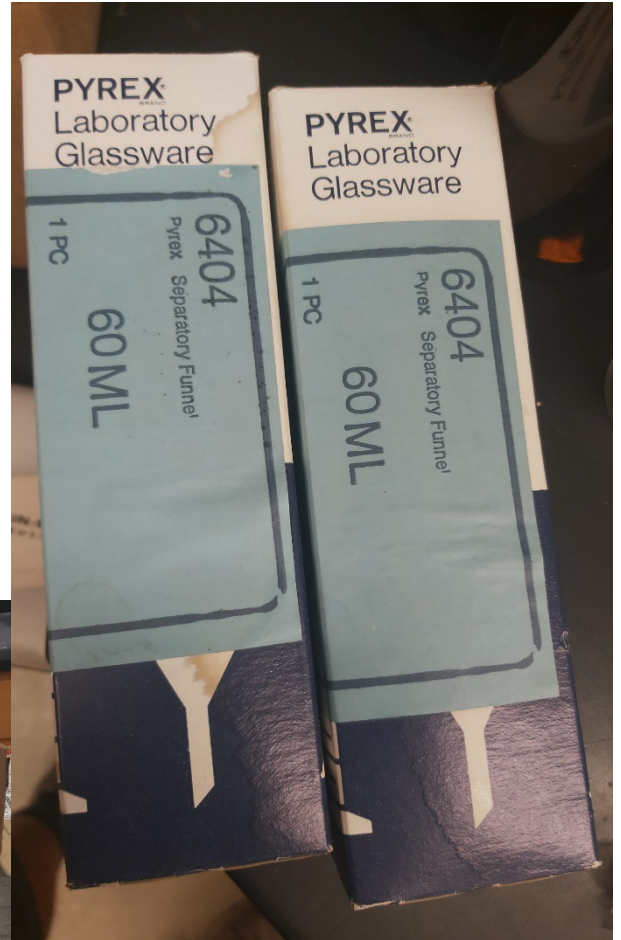
Crucibles



Glassware







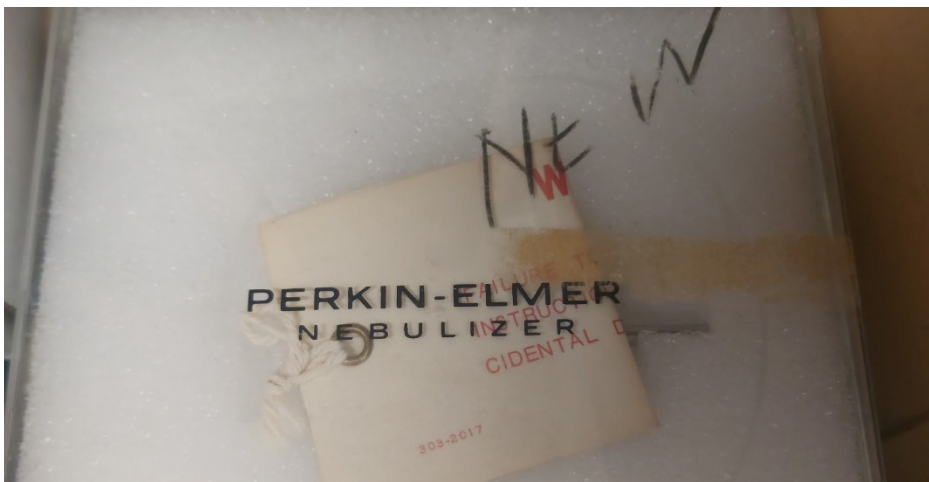
Hybridization tubes



Skoog media



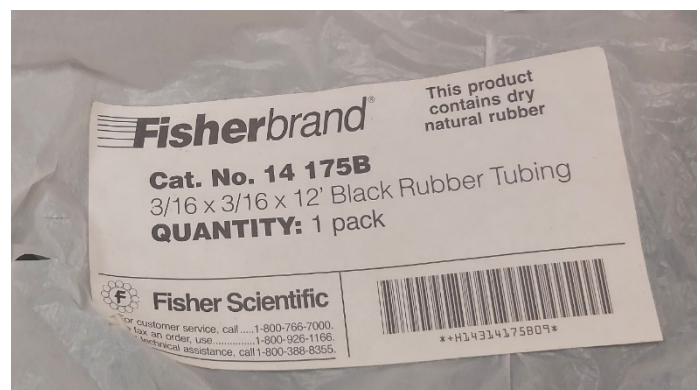
Nebulizer



Cork and rubber stoppers



Rubber tubing



Glass pipettes



Capillary tubes



Disposable vacuum blood vial, unused

