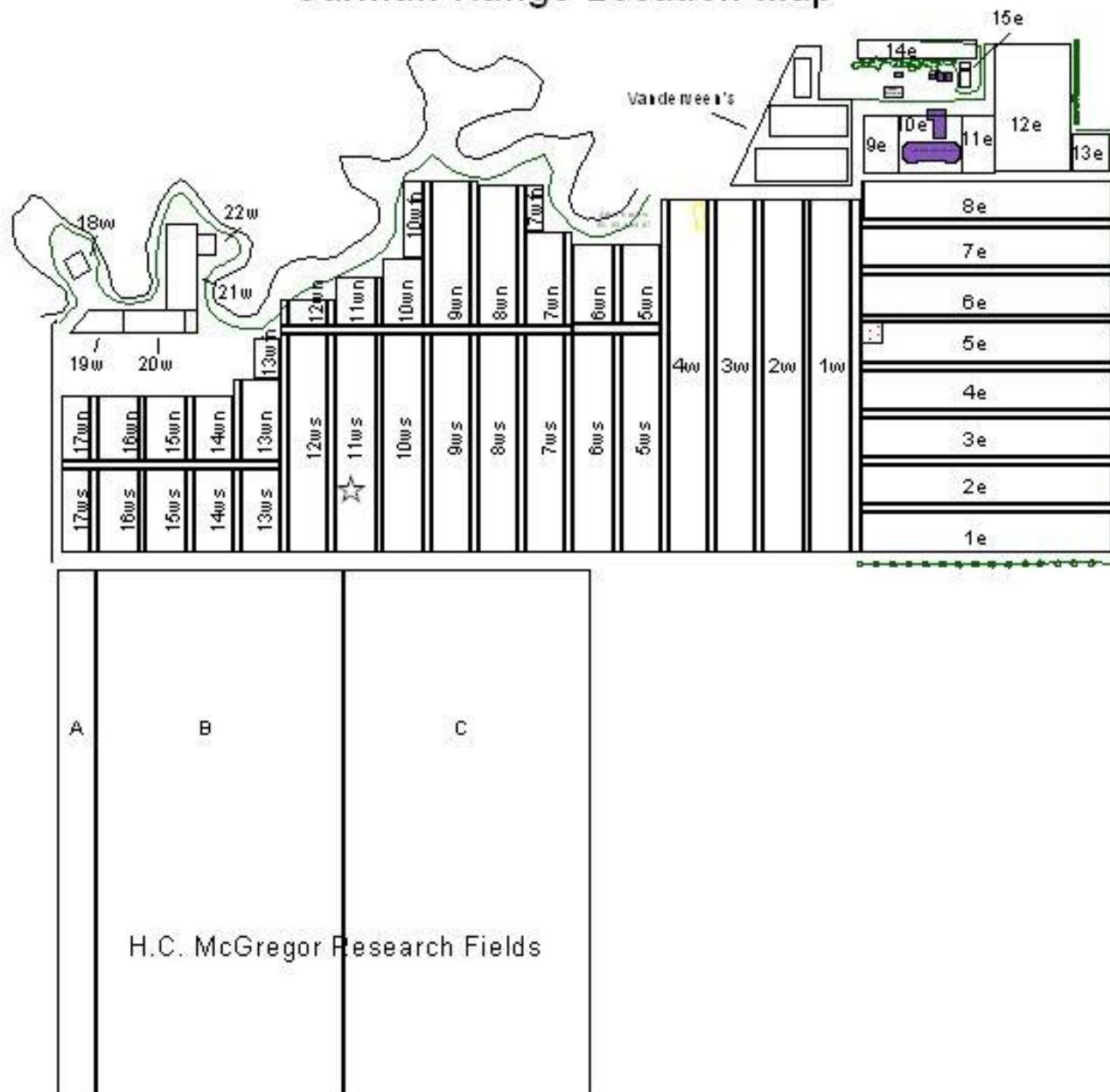


University of Manitoba
Ian N. Morrison Research Farm,
Carman & Region Facility
Safety Orientation





Carman Range Location Map



IAN N. MORRISON RESERACH FARM CARMAN & REGION FACILITY CARMAN, MB

BUILDING ALARMS & LOCK UP PROCEDURES

Building Alarm System

Alarm Access Code

Lockup Procedures

Fire Procedures

First Aid Kits

Chemical Storage

Ask Before You Dig/Soil Samples

Computer & Internet Access

Bulk Fuel Filling Procedures

http://umanitoba.ca/faculties/afs/dept/plant_science/grad_studies/1081.html

Justice Zhanda(Manager)

Cell:(204) 745-8642

Justice.Zhanda@umanitoba.ca

25024
PR 245



In Case of Emergency

Call 911

YOU ARE LOCATED AT:

Emergency Address

25024, PR 245, R. M. of Dufferin

(1.8 km West of Carman on Highway 245, from junction of highways 3 and 245)

**The University of Manitoba, Ian N. Morrison Research Farm,
Carman & Region Facility, Carman, Manitoba**

(North ½ Section 23-6-5W, Southwest ¼ Section 23-6-5W)

Urgent Numbers:

Campus Security, Fort Garry

1-204-474-9341 (emergency)

Alarm issues

1-204-474-9312 (non-emergency)

Non-emergency Numbers:

Justice Zhanda

1-204-745-8642 (cell)

Terrance Anseeuw

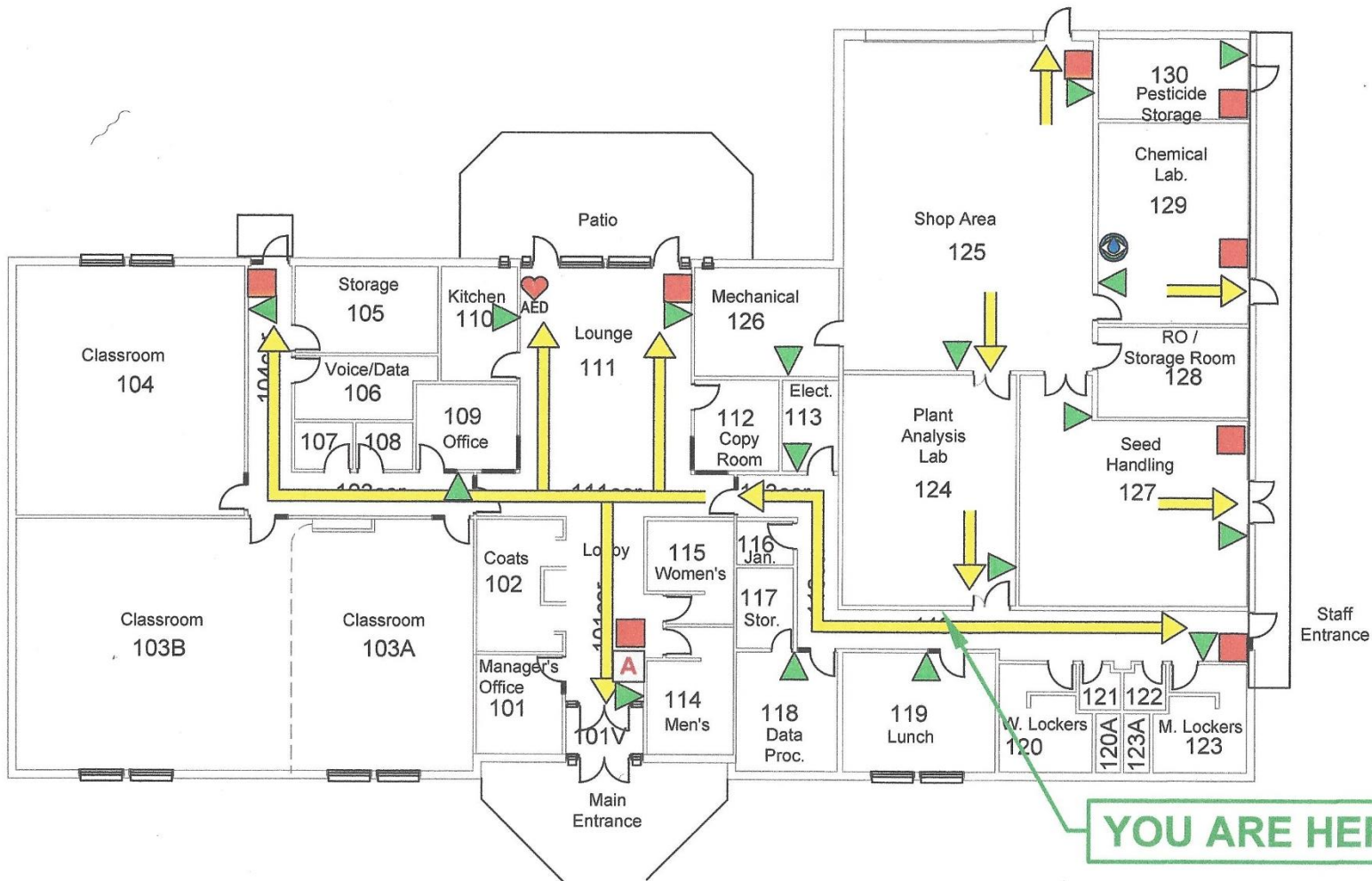
1-204-781-8510 (cell)

Office

1-204-745-3944

Building Alarms

- Fire
 - Bells
 - REACT
 - Fire plan



YOU ARE HERE

EMERGENCY EXIT PLAN

IAN N. MORRISON RESEARCH FARM
 CARMAN & REGION FACILITY - 100 Level
 25024 Rural Municipality of Dufferin
 North 1/2 Section 23-6-5W
 Carman, Manitoba
 EP-690-L0100-EEP119COR
 October 31, 2017



<p>Physical Plant Department 89 Freedman Crescent Winnipeg, MB</p> <p>UNIVERSITY OF MANITOBA</p>	<p>Annunciator Panel</p>	<p>Automated External Defibrillator</p>	
	<p>Pull Station</p>	<p>Fire Extinguisher</p>	<p>Emergency Eyewash/Shower</p>
	<p>Exit Route</p>		

UNIVERSITY OF MANITOBA - CARMAN & REGION FACILITY

GENERAL **FIRE EMERGENCY** PROCEDURES

SHOULD YOU DISCOVER OR SUSPECT A FIRE

R equest everybody in the area to evacuate the building. Remove anybody in immediate danger.

A ctivate the building fire alarm system by pulling the manual pull station. From a safe location, **dial “911”** and report the fire. Also, inform University Campus Security, telephone: 1-204-474-9341.

C onfine the fire by closing all doors and windows.

E xtinguish the fire using the appropriate fire extinguisher. Do not attempt to extinguish a fire if this will place you in immediate danger.

NEVER USE ELEVATORS DURING A FIRE ALARM.

WHEN THE FIRE ALARM SOUNDS

1. Cease all activities. Turn off heat producing devices. Leave overhead lights on.
2. Close all doors and/or windows in the immediate area.
3. Evacuate the building immediately using the nearest safe available stairwell.
4. Remain outside the building until the most senior member of the Carman Fire Department or the University Fire Marshal gives “ALL CLEAR”.

List of Plant Science Department People Certified for First Aid/CPR

- Terrance Anseeuw 204-781-8510
- Roger Larios 204-223-8991
- Becky Dueck 204-296-6367
- Rob Visser 204-807-9933

First aid kit location in the Workshop



Vehicle keys



JD 755

JD 755



JD 6600

JD 7330

JD 7400

Weigh Wagon

JD 1010



JD 1120



WATHER

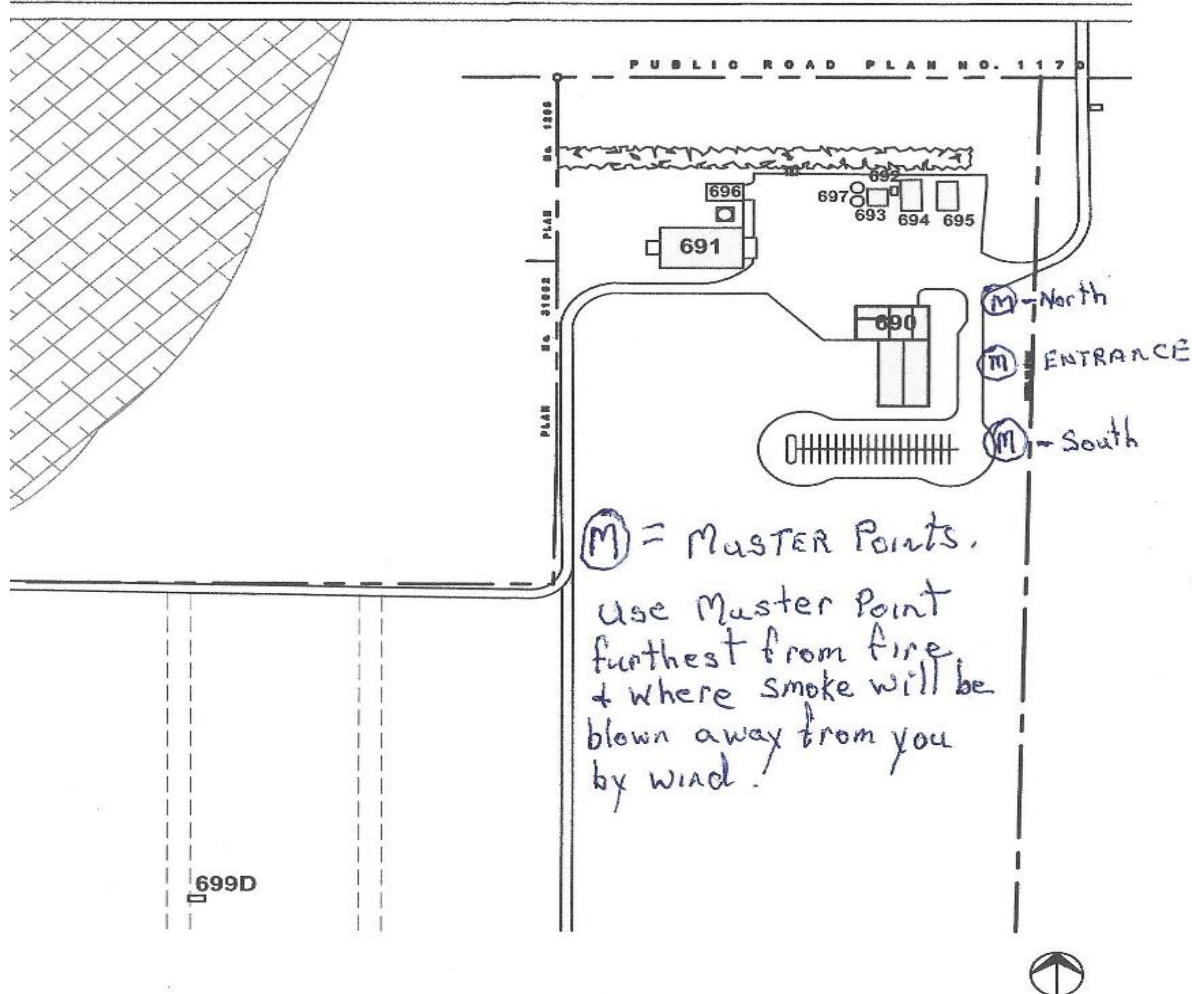
AED location (Foyer)



Building Alarms

- Fire
- Intrusion
 - Horn
- Carbon Monoxide
 - smoke detector sound
 - shop fan

Muster Points-In case of a fire at Main Building 690



699D

UofM BUILDING NUMBERS
IAN N. MORRISON RESEARCH FARM
CARMAN & REGION FACILITY - 690
North 1/2 Section 23-6-5W
Carman, Manitoba
SITE PLAN
NOVEMBER 22, 2019

Building & Computer access

- Building Alarm Code -required to enter building when alarm is set
- Computer Access
 - Use of internet
 - WiFi password connection problems
- Questions when technical supervisor not available.

Weather alerts & Being Prepared

- Weather radio
- Weather links and Warnings
 - Tornados (what would you do?)
 - Lightning-(What would you do?)
 - Hail
 - Shear winds
 - Frost



Equipment Operation

- Training
- Equipment and Fuel log books
- Demonstrate to supervising technician
 - Tractors, Spraying, Lab, Refueling
 - Shop tools
 - Welders
- Mechanical problems
 - Oil and fluids
- Ordering fuel

Talk to your supervisor or Justice/ Terry

Tools for the Day

- Meter tapes
- Flags
- Safety Equipment
- Hoes, shovels, forks
- Extra Scale?
- Fuel non plant science equipment??

Carman Waste Transfer Station

Transfer Station Hours:

Monday, Wednesday, Friday

1pm to 4pm

Tuesday and Thursday

CLOSED

Saturday

11am to 4pm

Recycling Depot Hours

Monday through Friday

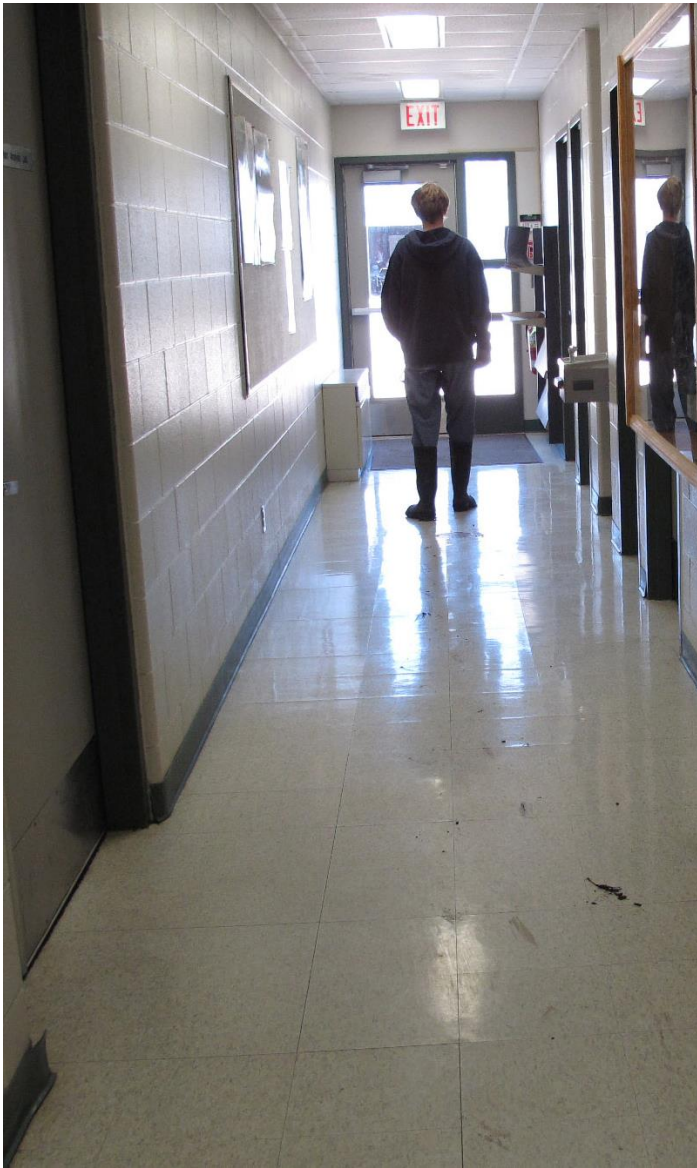
7am to 4pm

Saturday

8am to 4pm

House Keeping

- Cleanup after yourself
- Clean footwear
- Tool put away, not left in fields or back of vehicles.
- Recycle
- Full garbage bags









Do not leave seed
like this



Parking and locking up

- Parking when working at the Research Station
- Lock up and cleanup
- Let Justice know if you are working late and will lock up.



GOVERNMENT ROAD ALLOWANCE⁵

PUBLIC ROAD PLAN NO. 1170

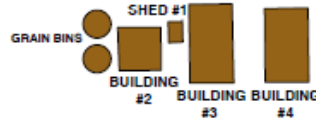
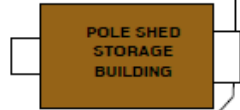
PLAN No. 120015

PLAN No. 31062



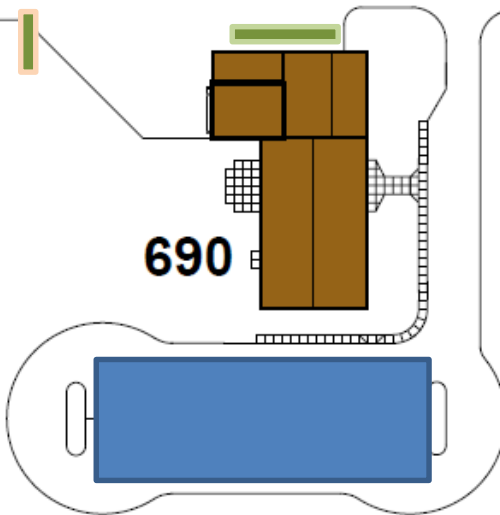
BUILDING #9

691



service yard

690



EXISTING GRAVEL ROAD


EXISTING GRAVEL ROAD



- Personal/Public Vehicles
- Department/ Vehicles entering plots

CARMAN & REGION FACILITY
SITE PLAN

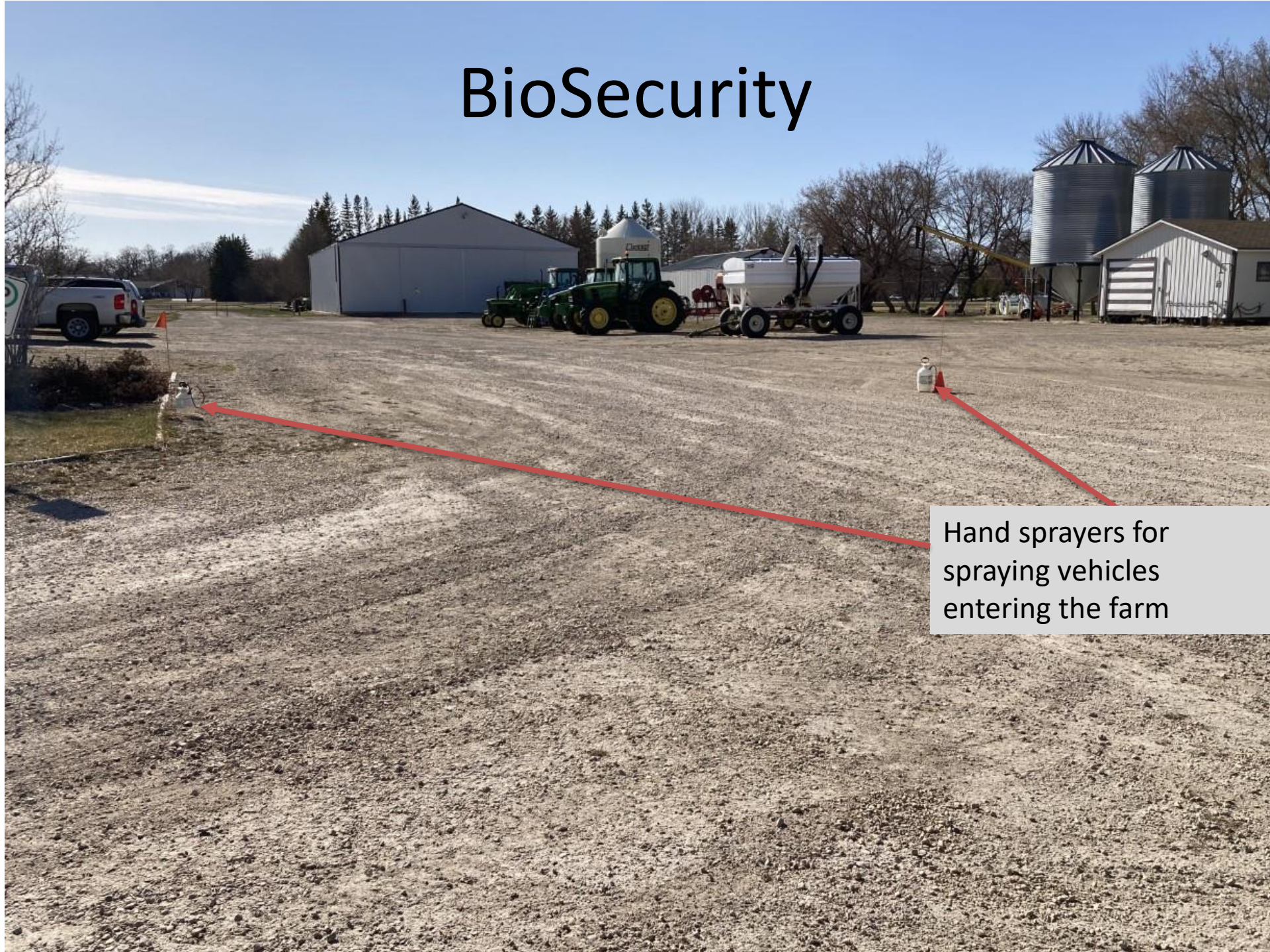
OCTOBER 30, 2004



Do not leave any items in the back of the truck



BioSecurity



Hand sprayers for spraying vehicles entering the farm





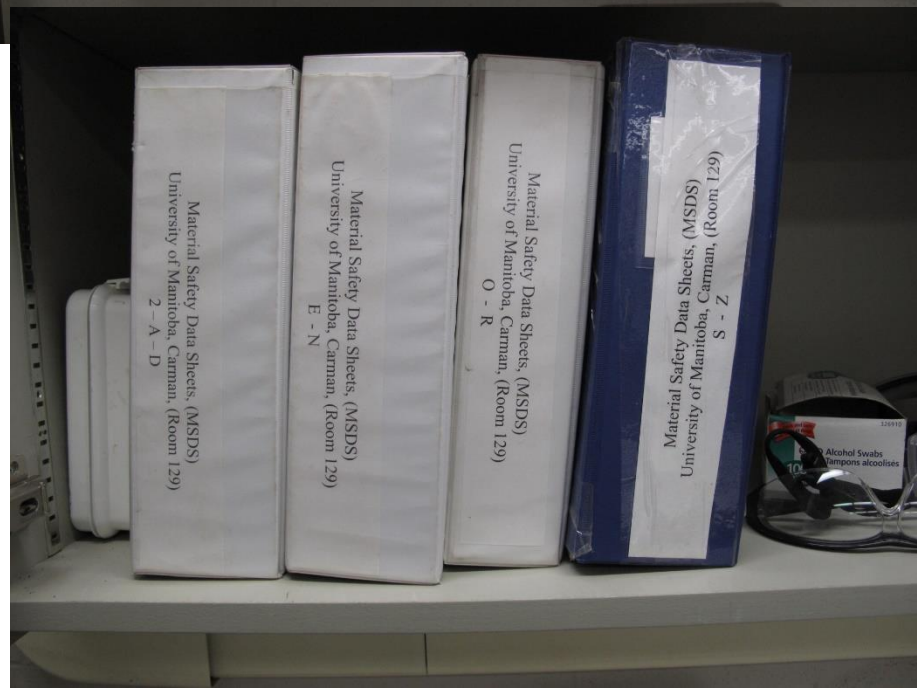
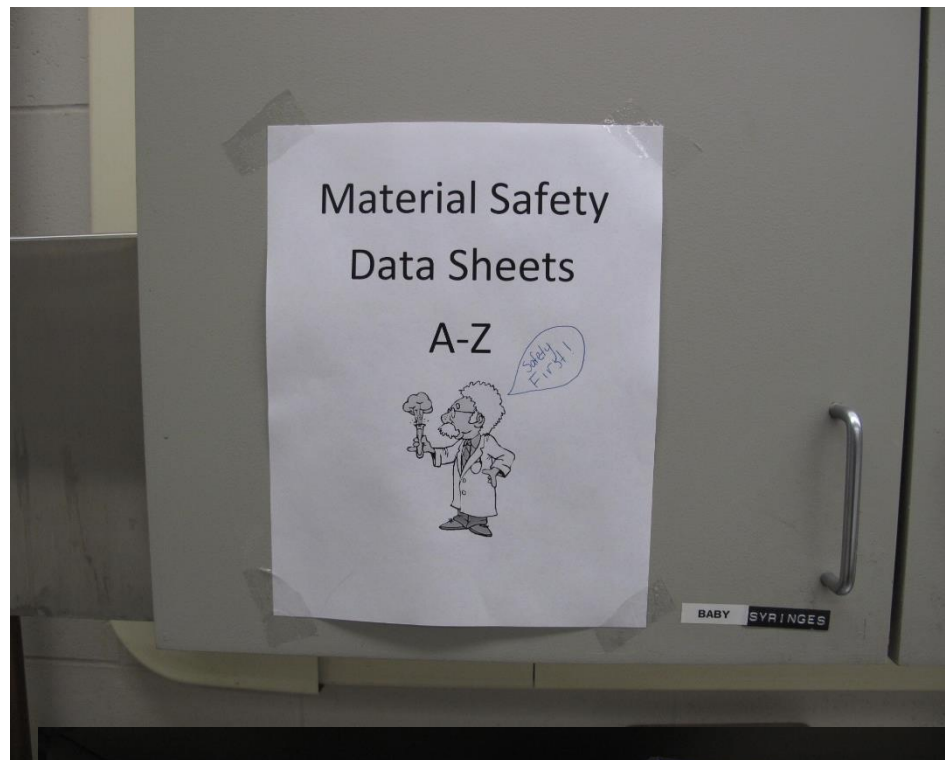
This will provide conducive **environment** for disease spread



Location of the Fuel tanks and Emergency fuel shut off switch







Hidden Hazards

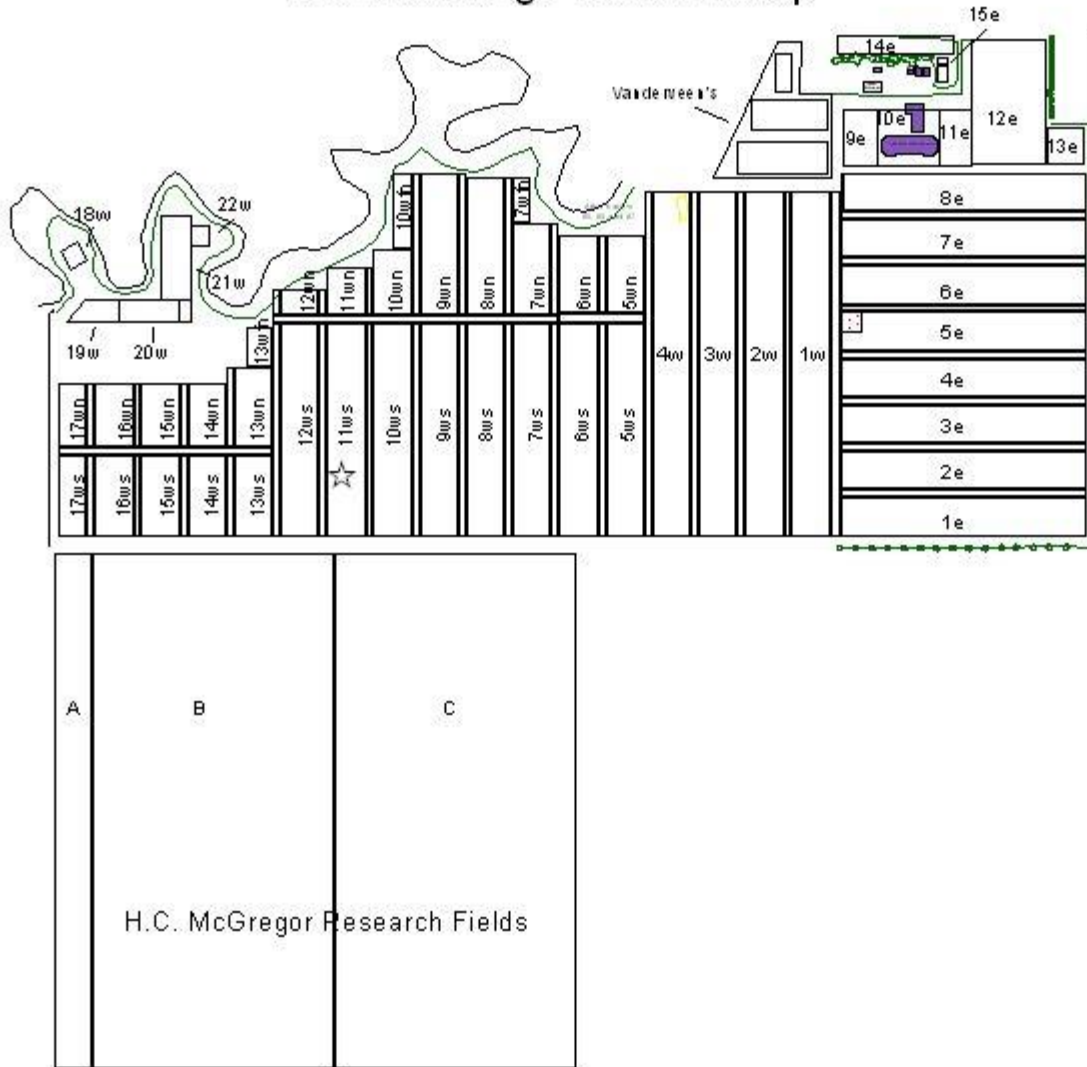
- Buried Lines:

Gas, Hydro, Telephone

Misting System, Septic Field

ASK BEFORE YOU DIG

Carman Range Location Map



Ditch

Cultivated Field

Tree line

Fuel Tanks

Septic Holding Tank

Pole shed building #9

Hydro feed from building #9 to #8

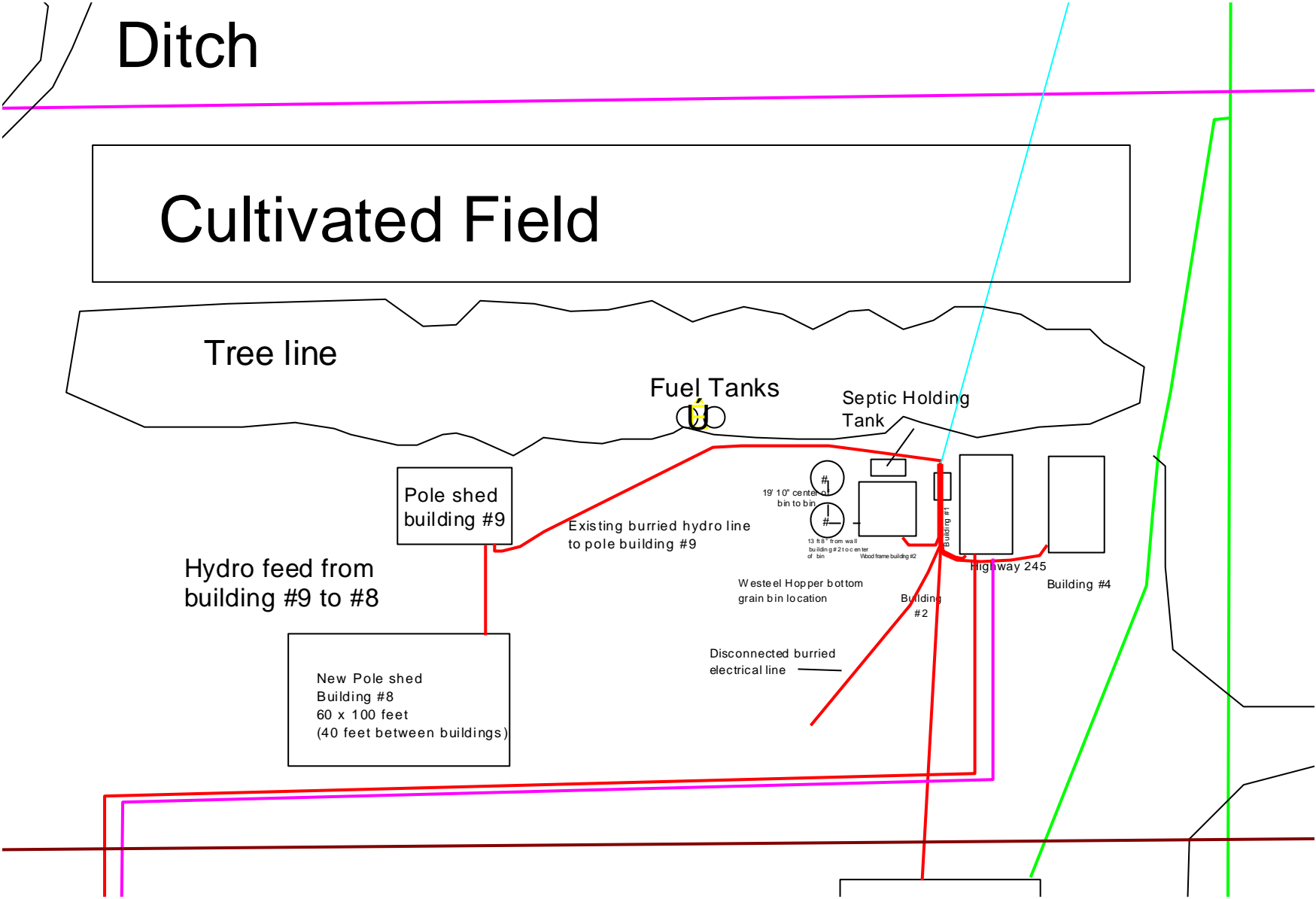
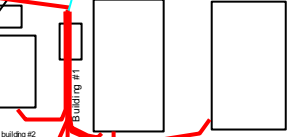
New Pole shed Building #8
60 x 100 feet
(40 feet between buildings)

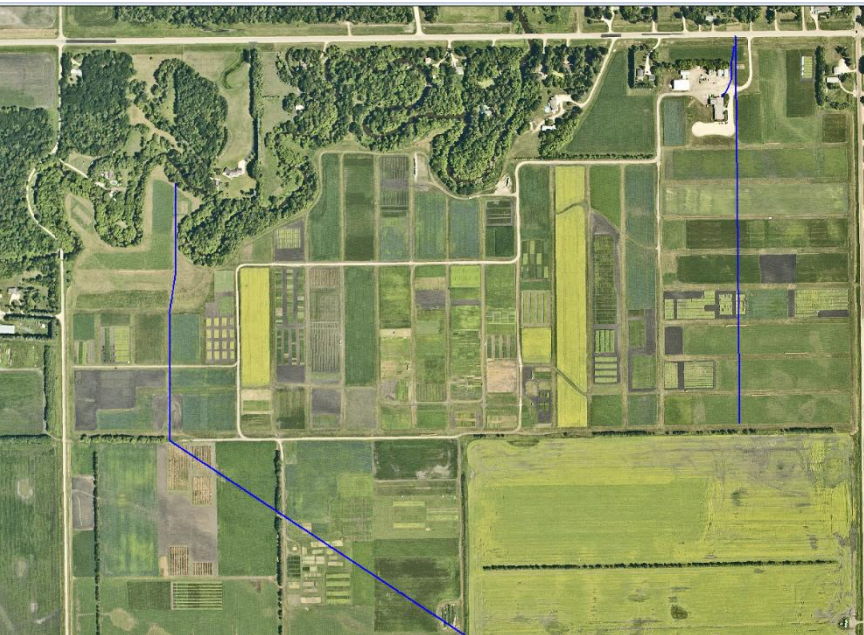
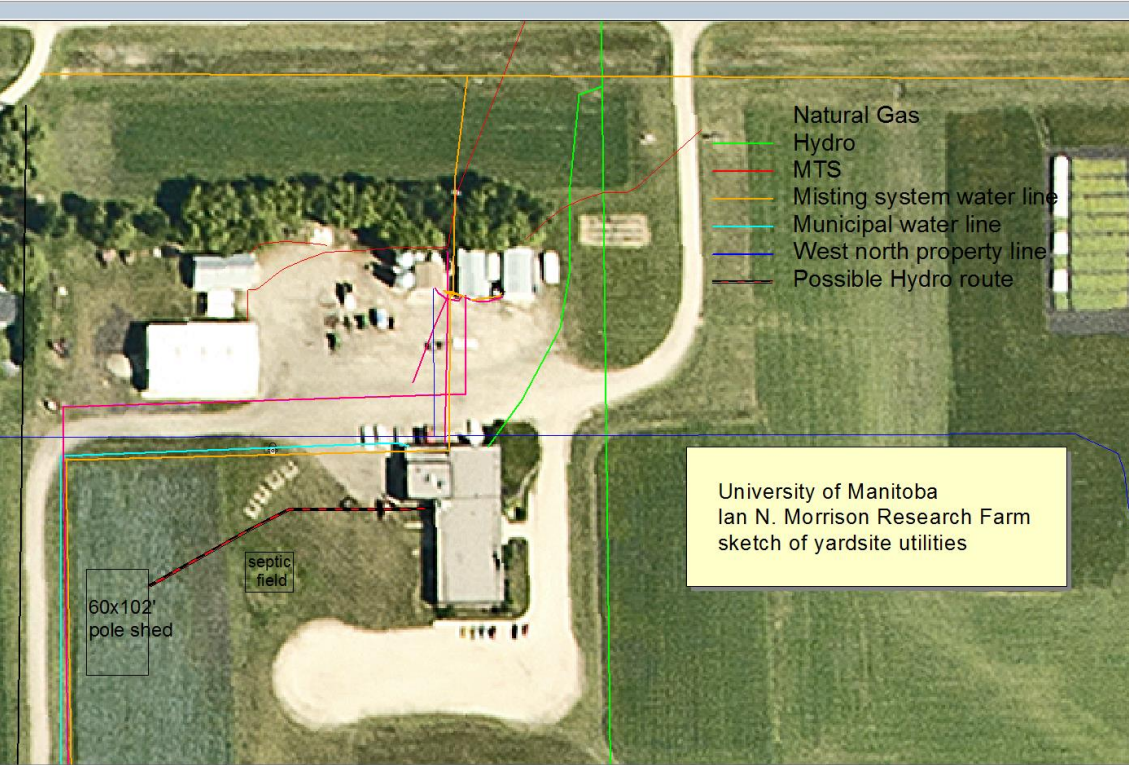
Existing burried hydro line to pole building #9

19' 10" center of bin to bin
13' 8" from wall building #2 to center of bin

Westeel Hopper bottom grain bin location

Disconnected burried electrical line





Septic Field located on the West end of the main building



Not so Hidden Hazards



Flags



Marker poles



Range rings



Misting box

Slow down, look out for other vehicles on farm roads



This is a safety concern



Not so hidden Hazards

Culverts, wet roads



Unstable River Banks



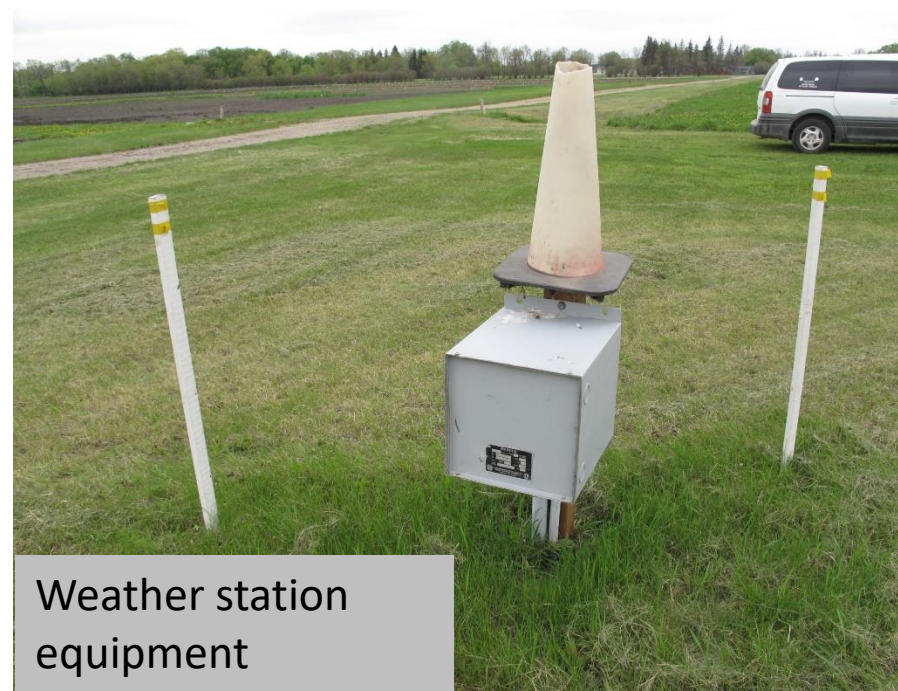
Soil pit



Walk in & large shed doors



Not so Hidden Hazards



Weather station equipment

Composting site



Provincial Road 245

