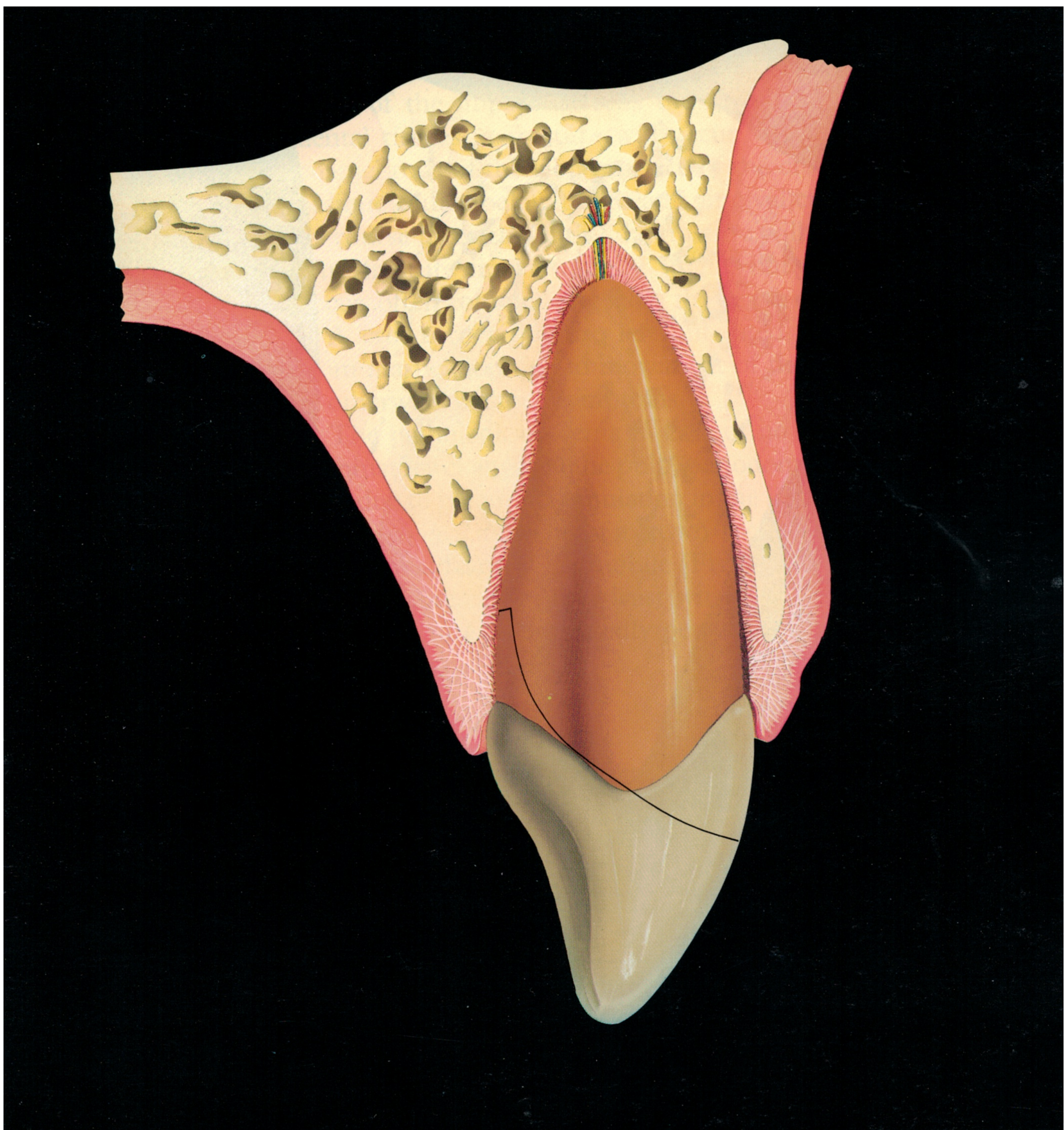
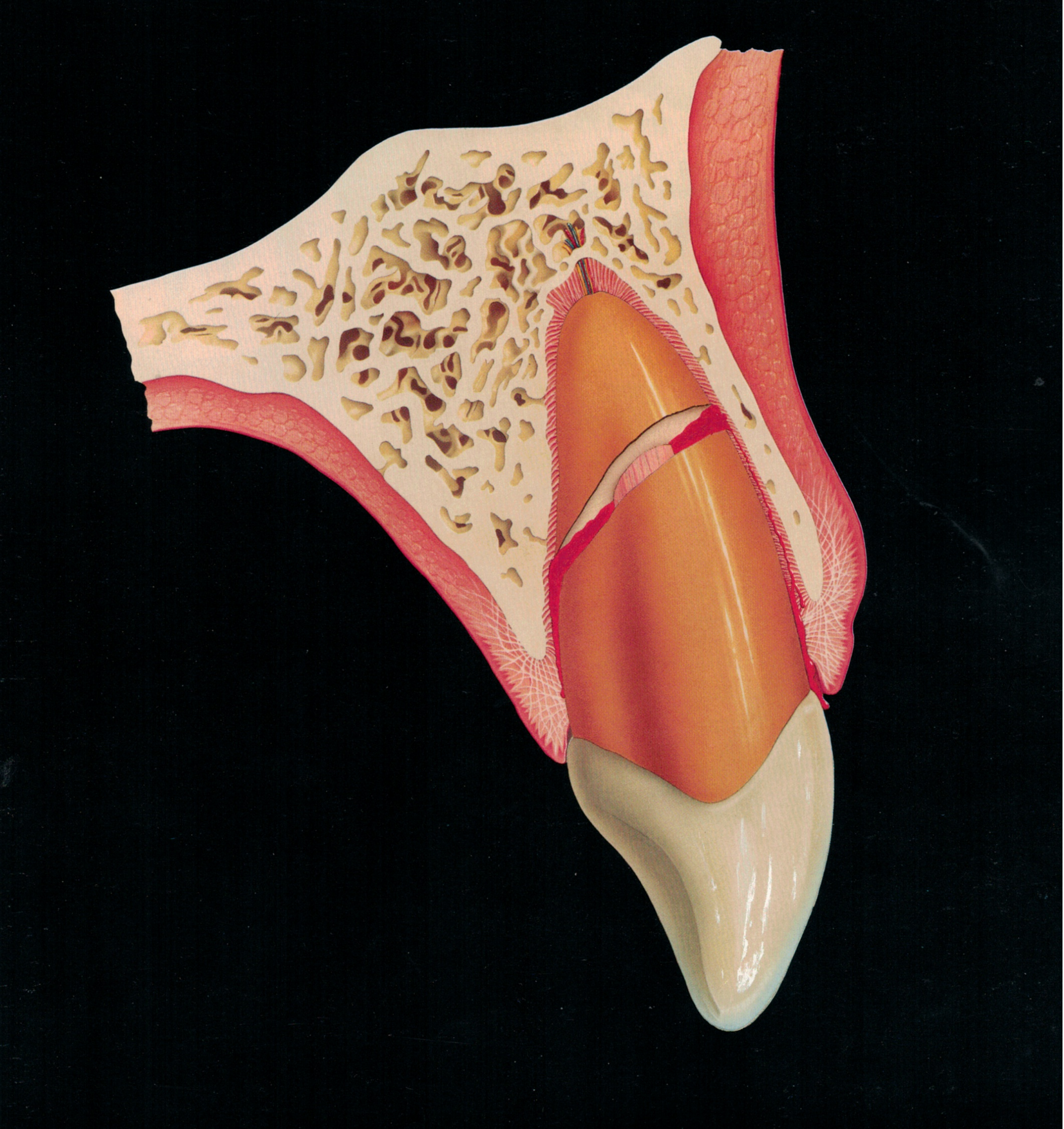


Figure 1. Crown Fractures – Treatment Recommendations.





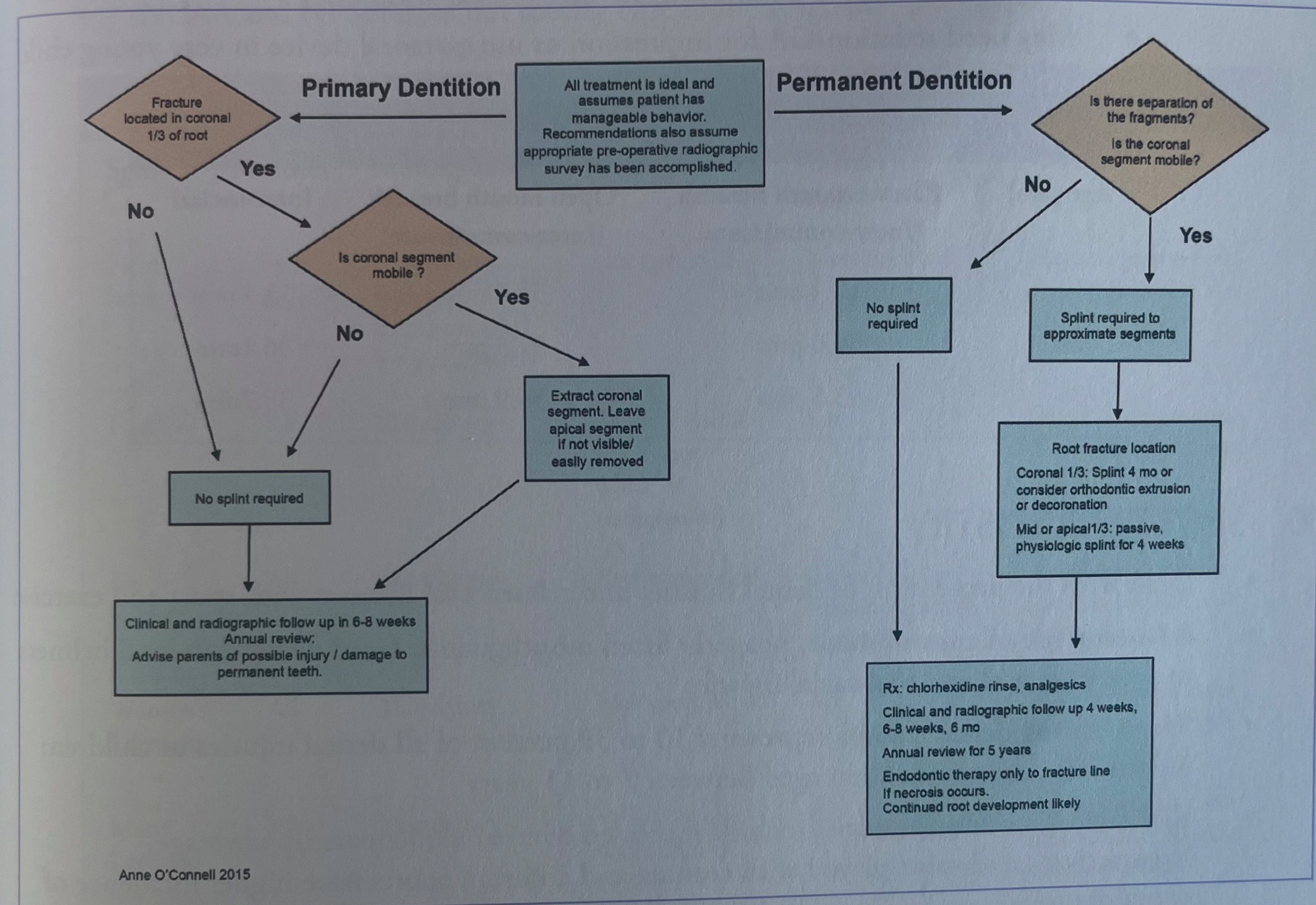
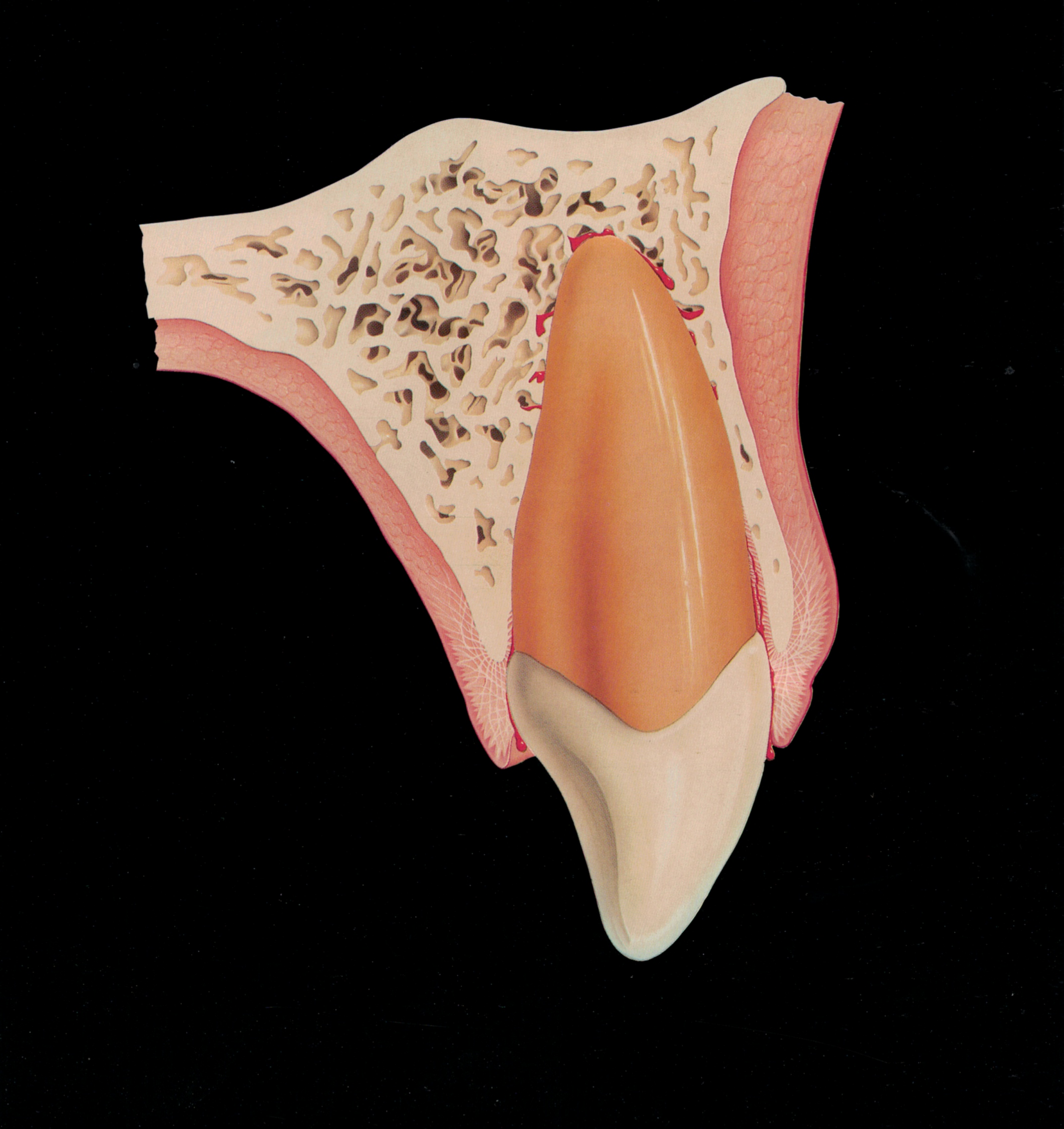


Figure 5. Root Fractures – Treatment Recommendations.



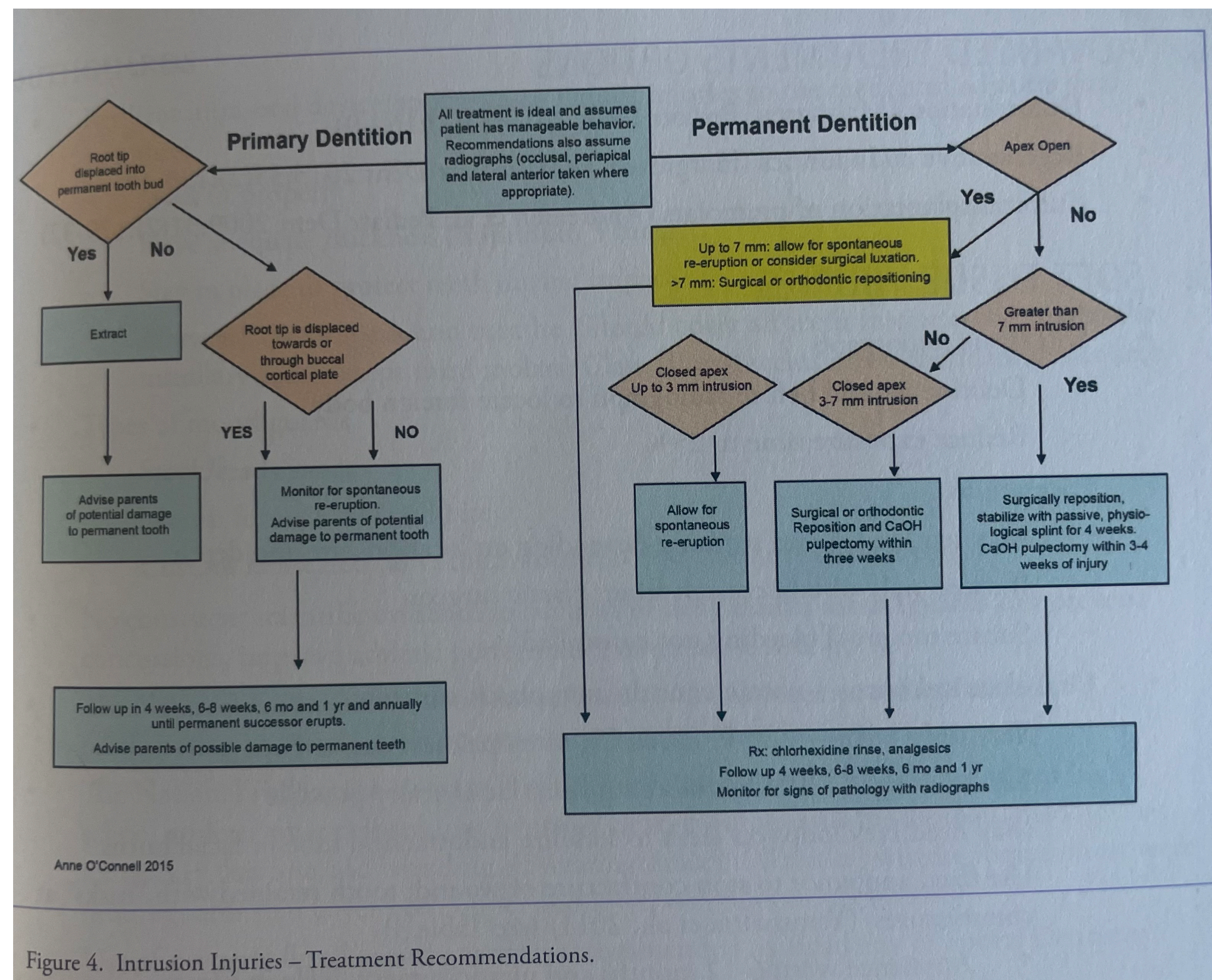
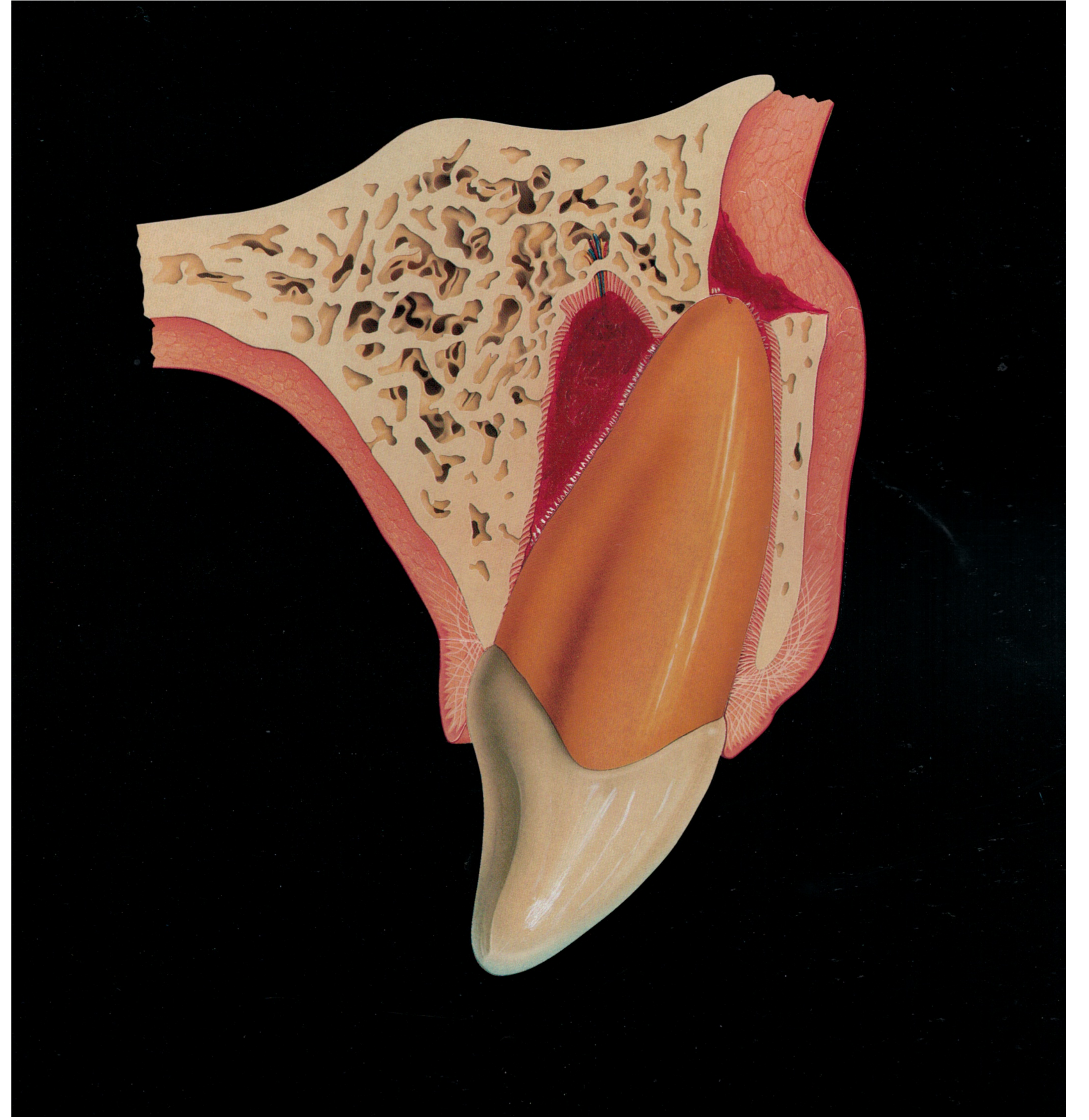


Figure 4. Intrusion Injuries – Treatment Recommendations.



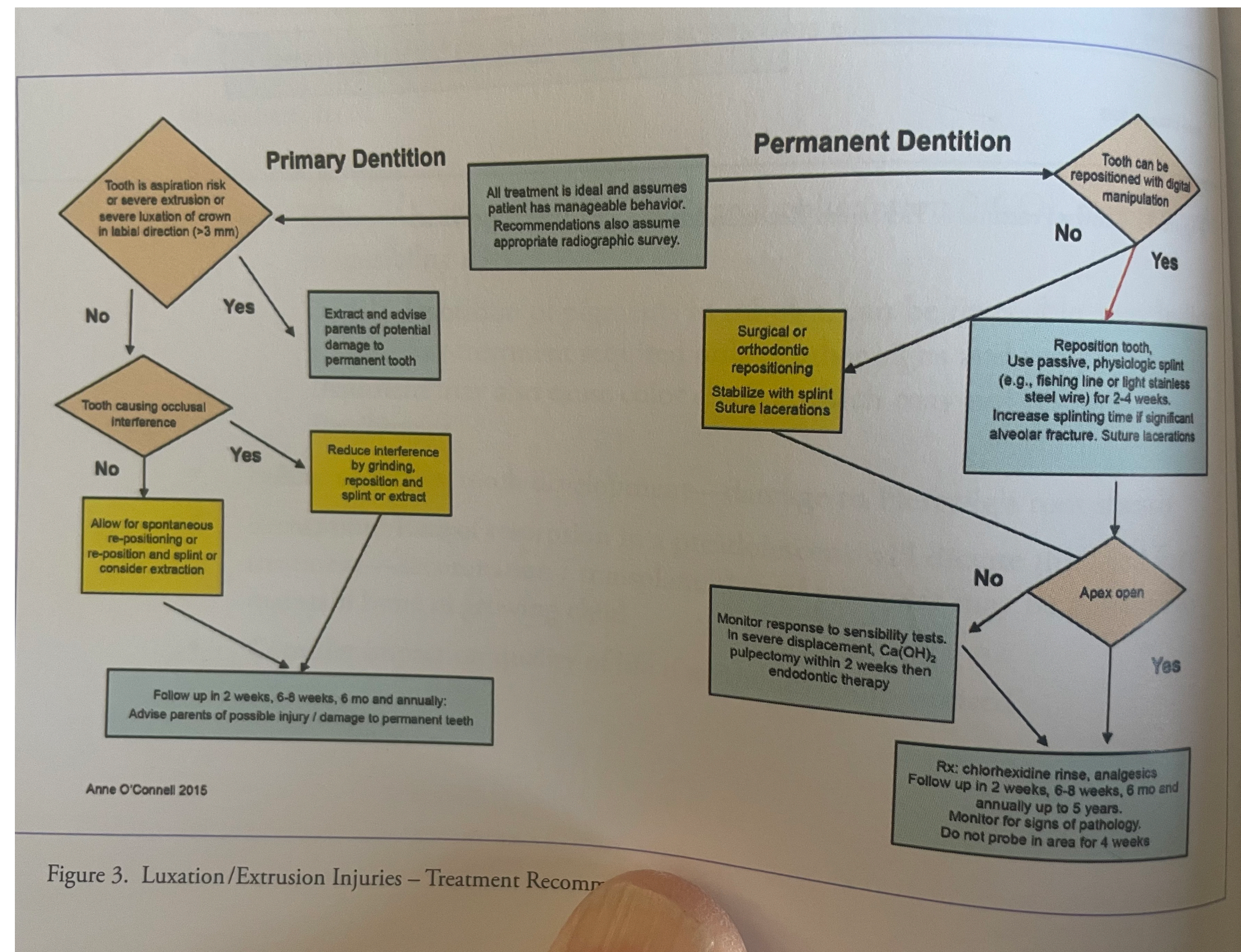
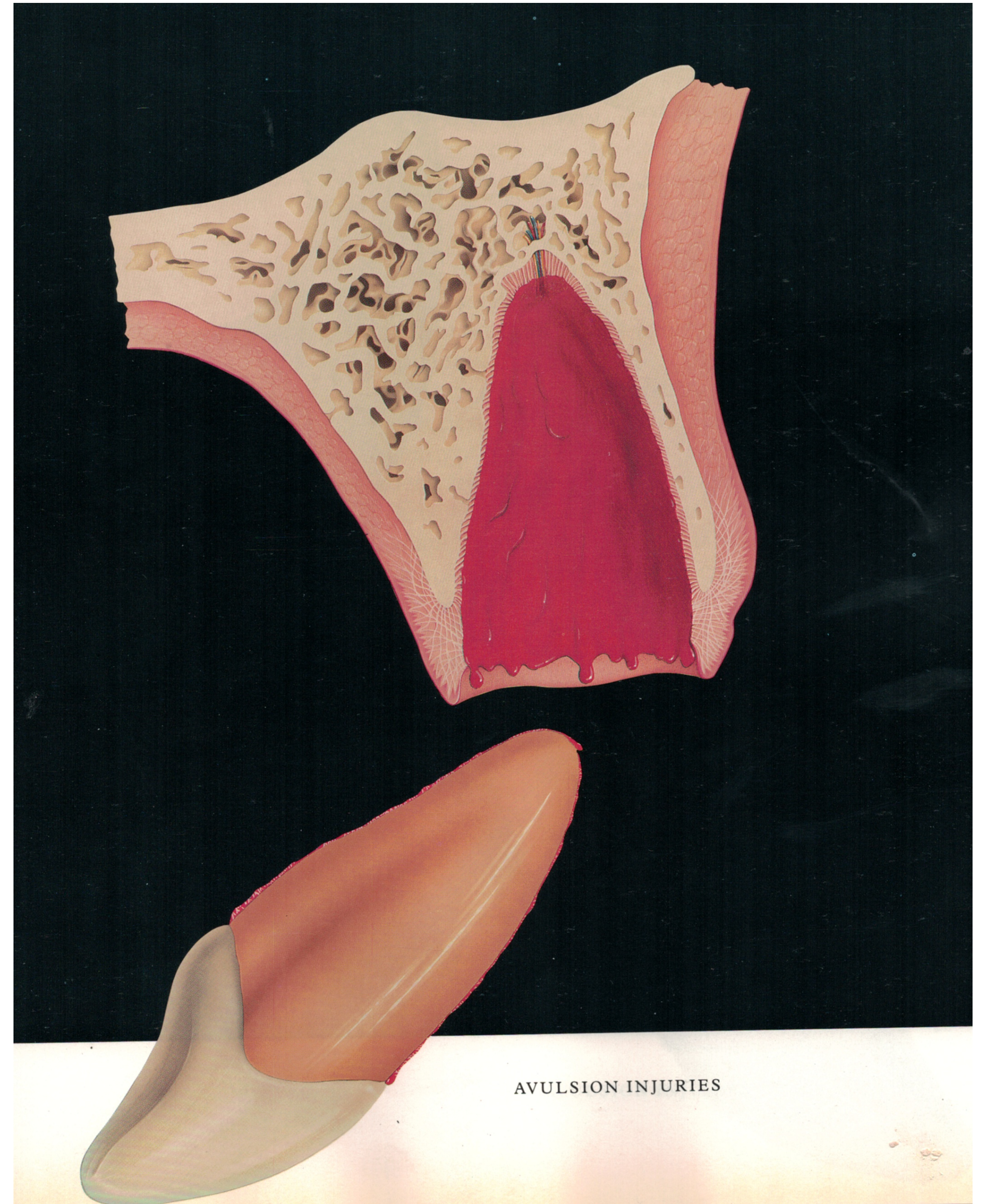


Figure 3. Luxation/Extrusion Injuries – Treatment Recomm



AVULSION INJURIES

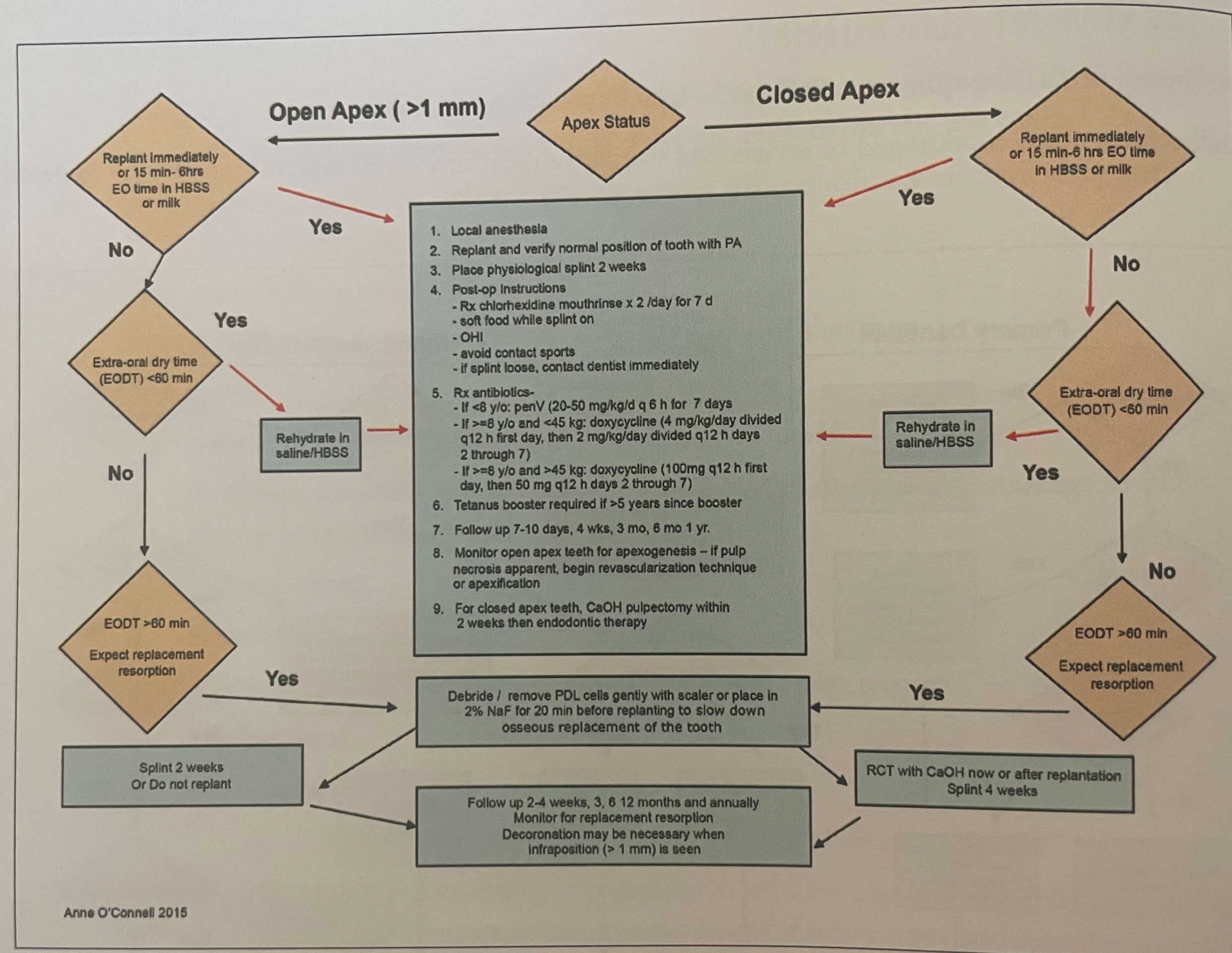
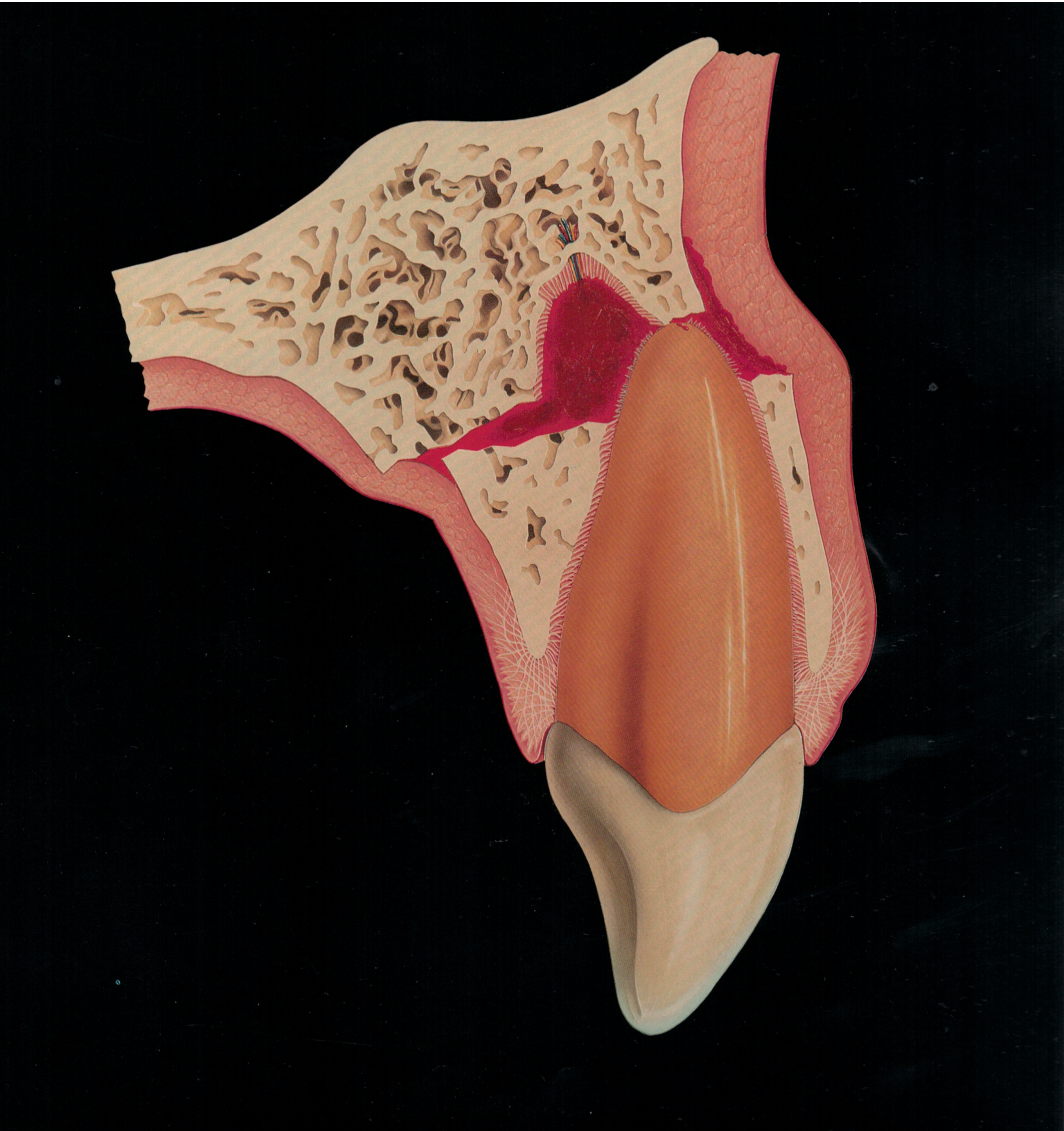
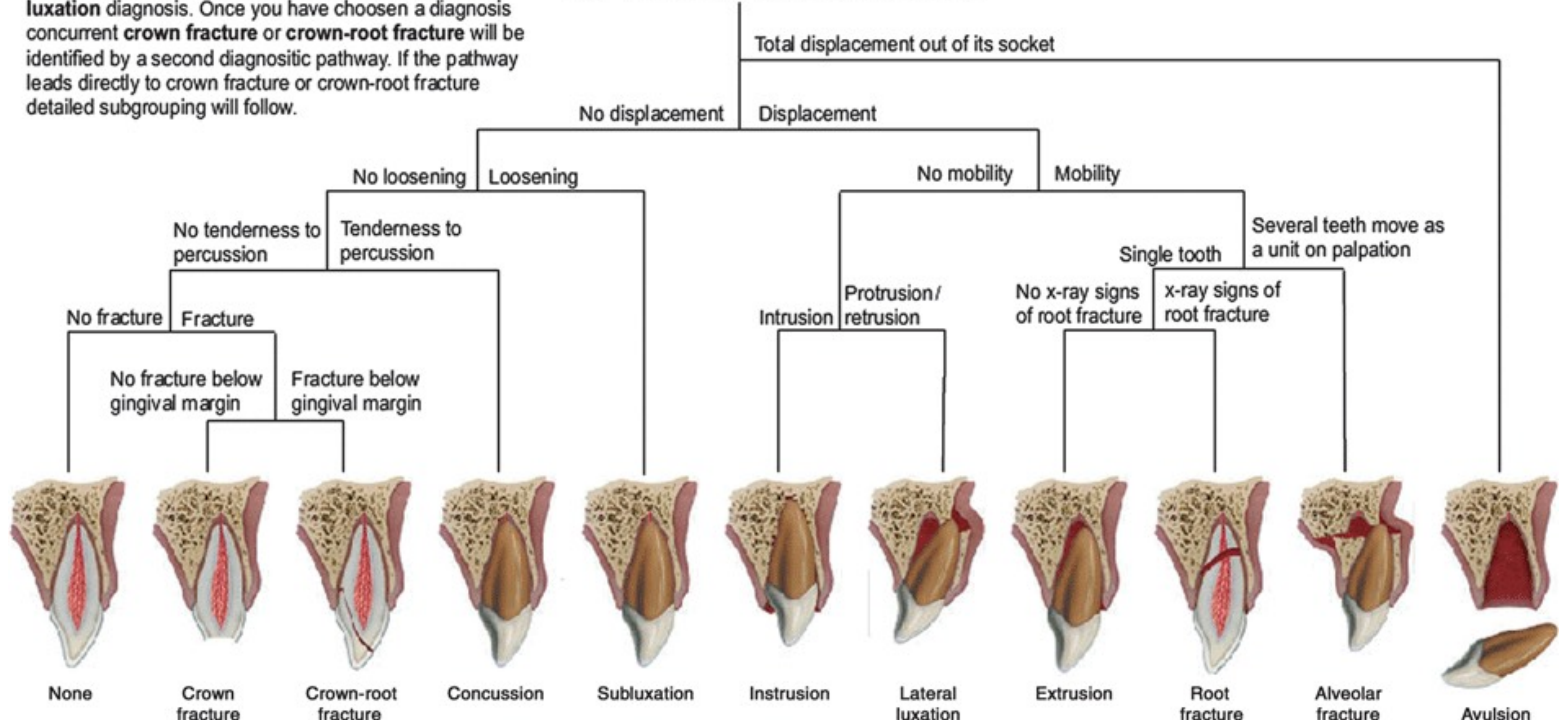


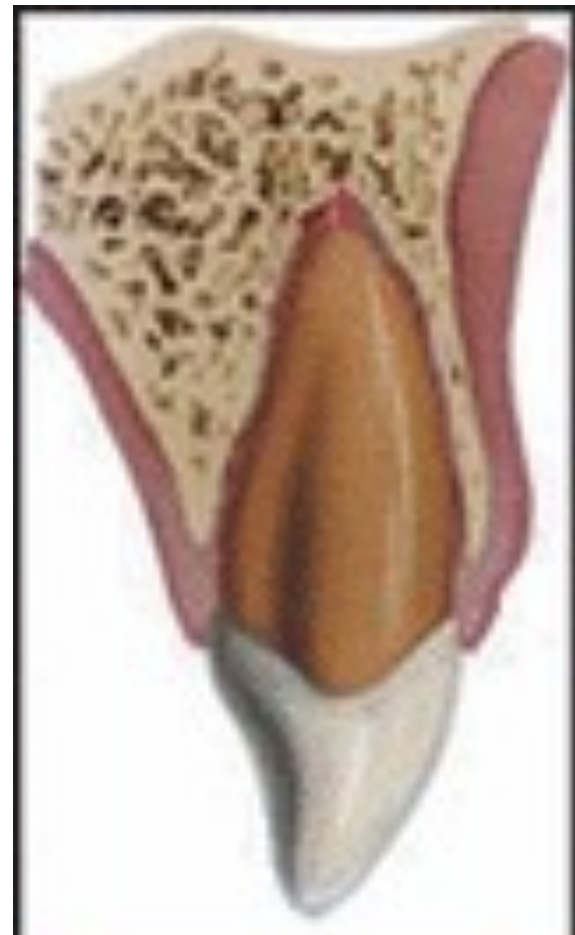
Figure 2. Permanent Tooth Avulsion – Treatment Recommendations.



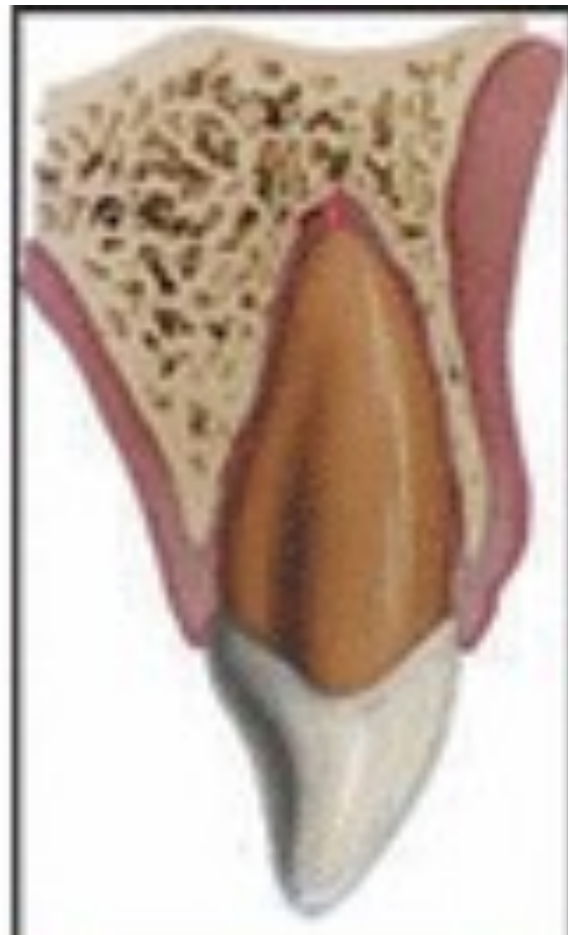
The diagnostic pathway starts by identifying the main **luxation** diagnosis. Once you have chosen a diagnosis concurrent **crown fracture** or **crown-root fracture** will be identified by a second diagnostic pathway. If the pathway leads directly to crown fracture or crown-root fracture detailed subgrouping will follow.

TRAUMA PATHFINDER

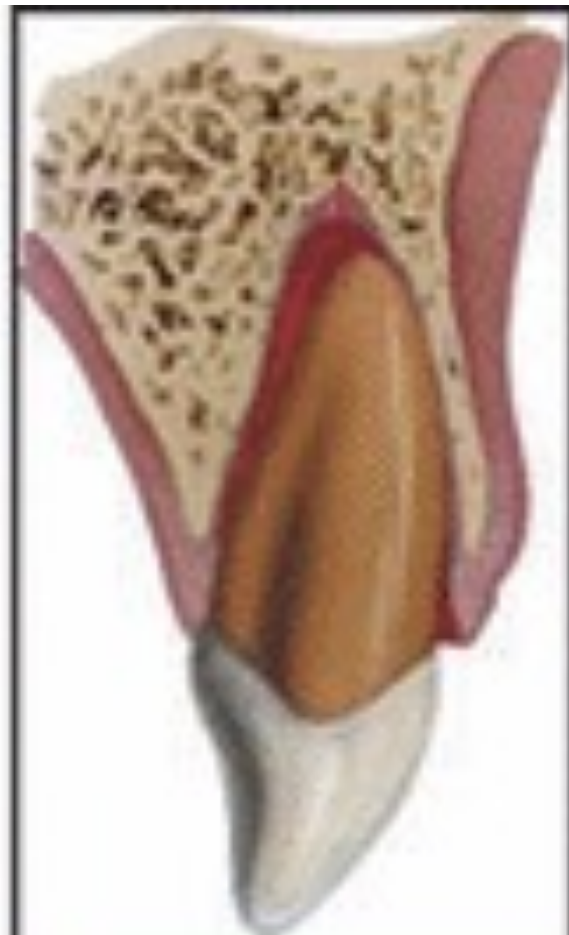




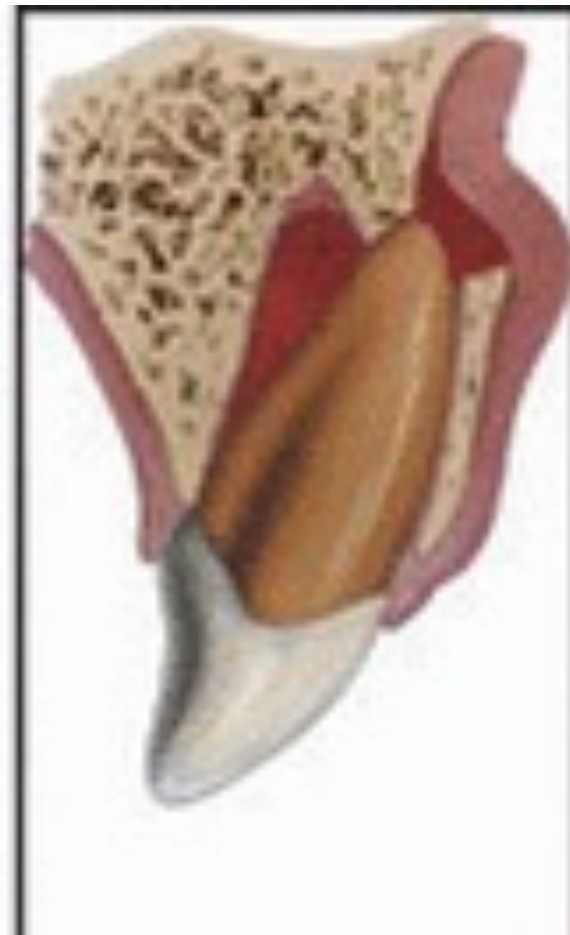
Concussion



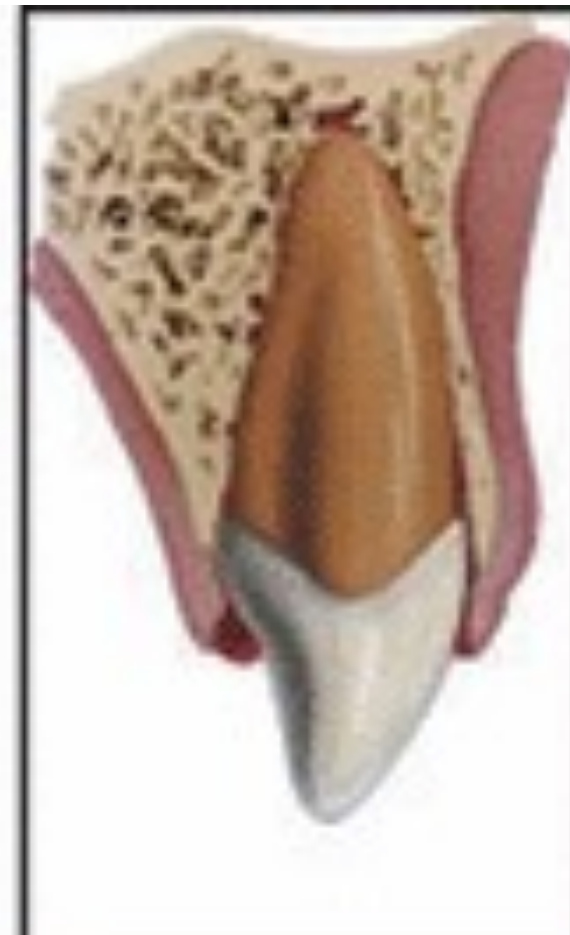
Subluxation



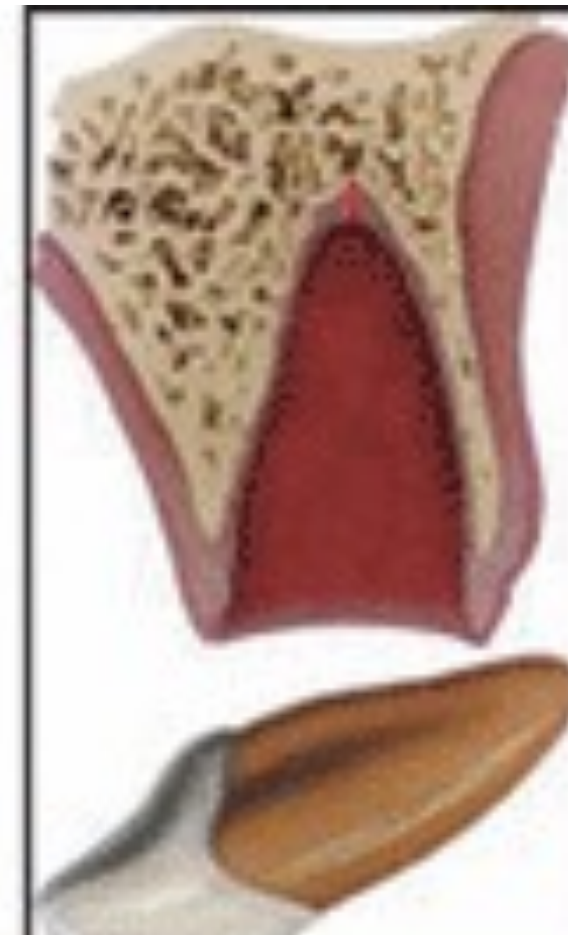
Extrusion



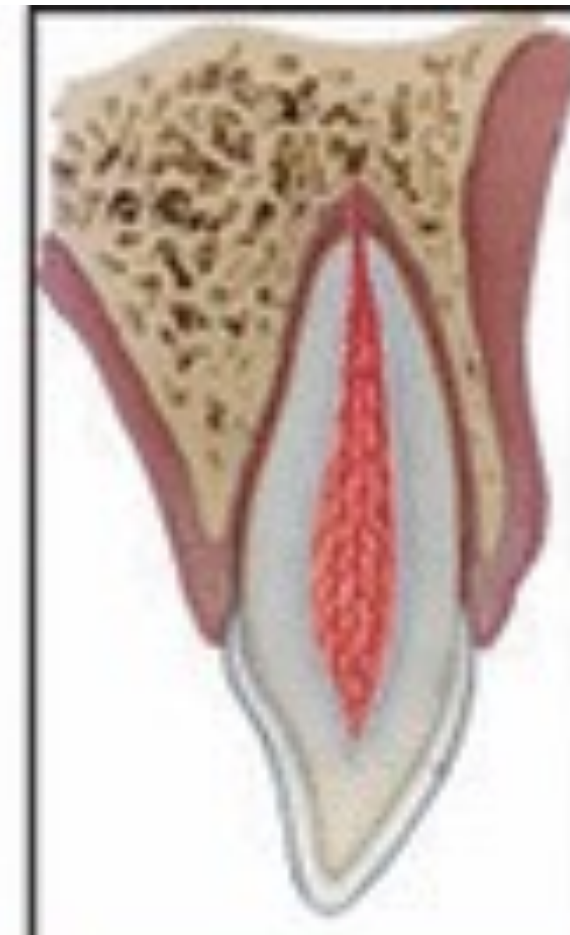
Lateral
luxation



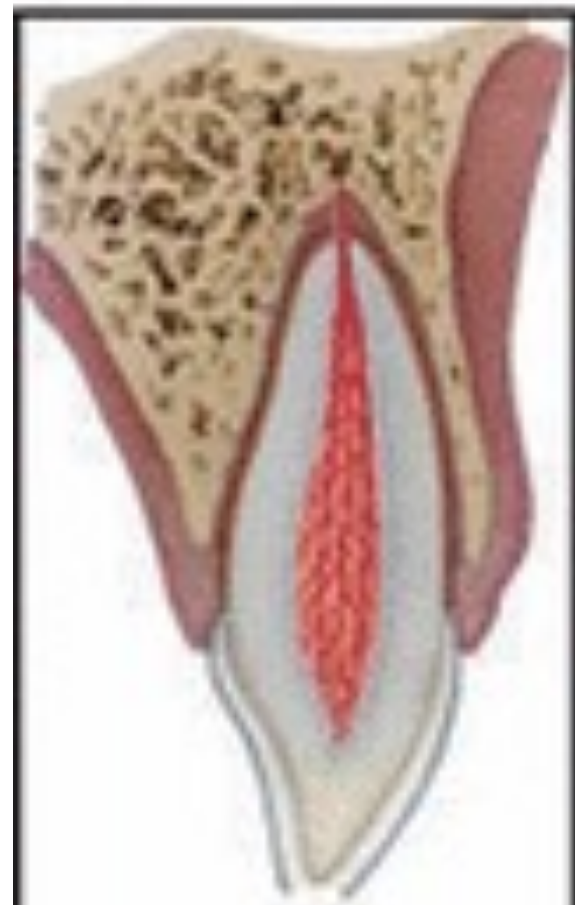
Intrusion



Avulsion



Infraction



Enamel
fracture



Enamel-dentin
fracture



Enamel-dentin
pulp-fracture



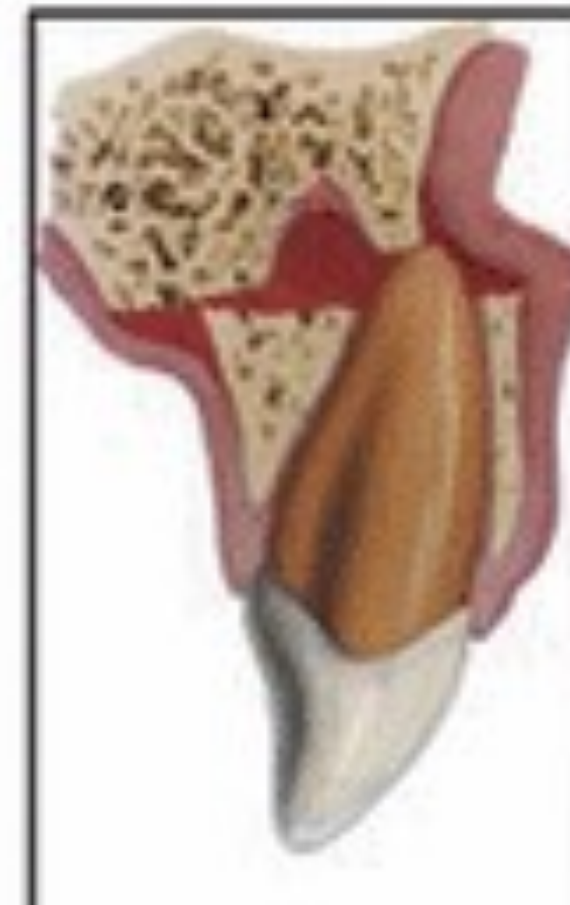
Crown-root
fracture
(uncomplicated)



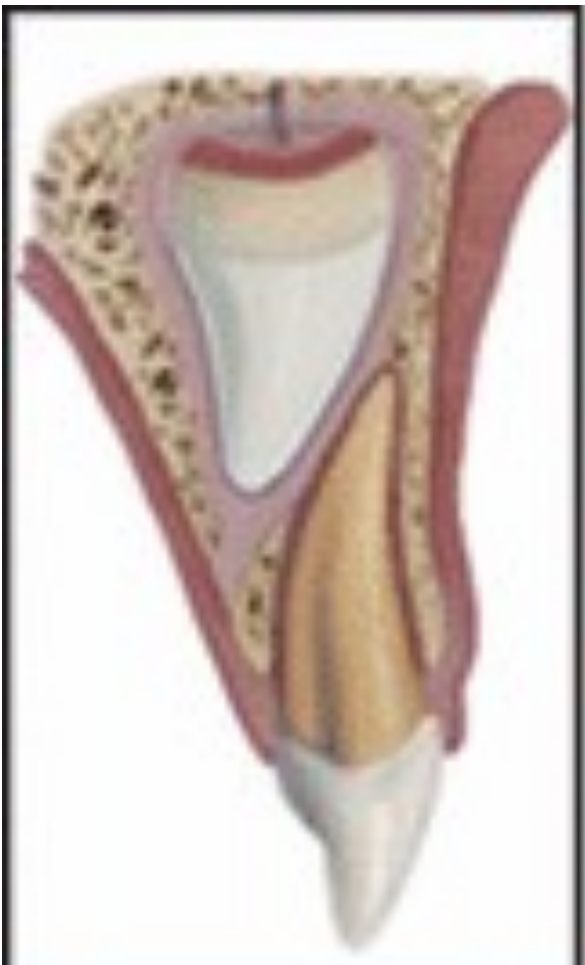
Crown-root
fracture
(complicated)



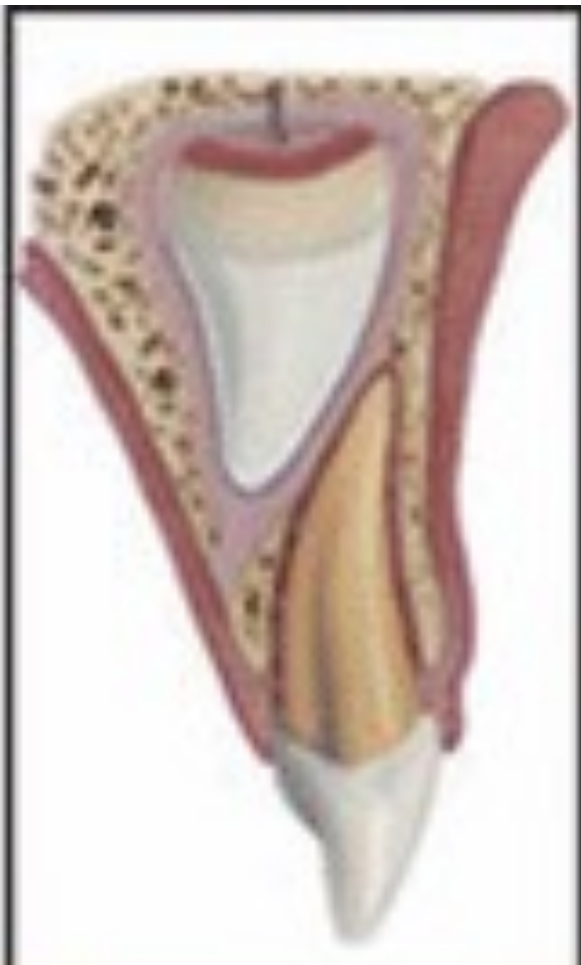
Root
fracture



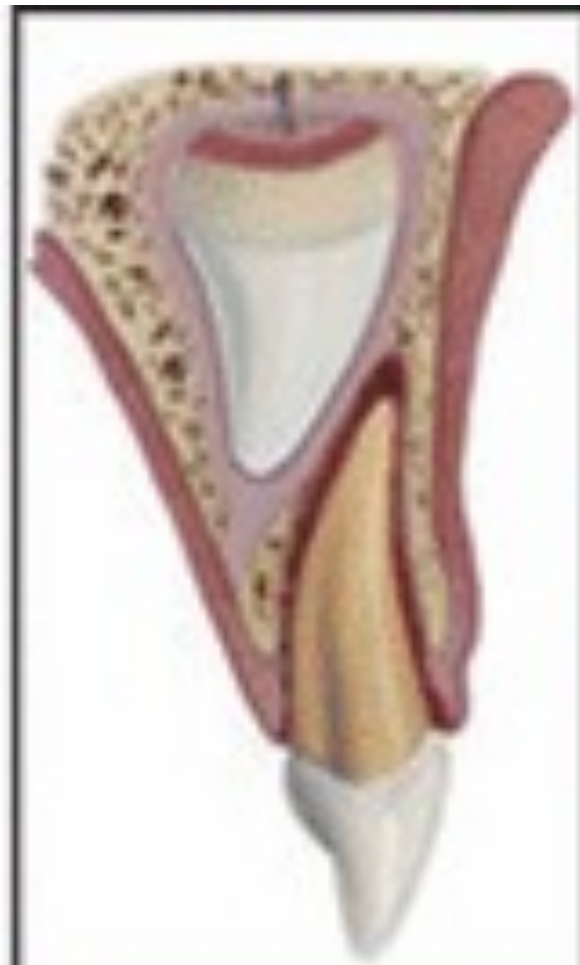
Alveolar
fracture



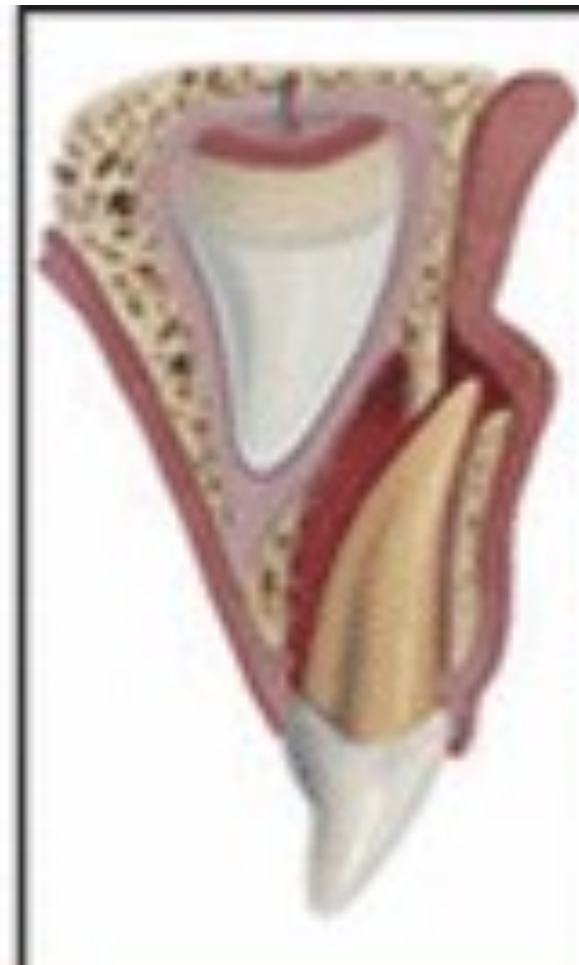
Concussion



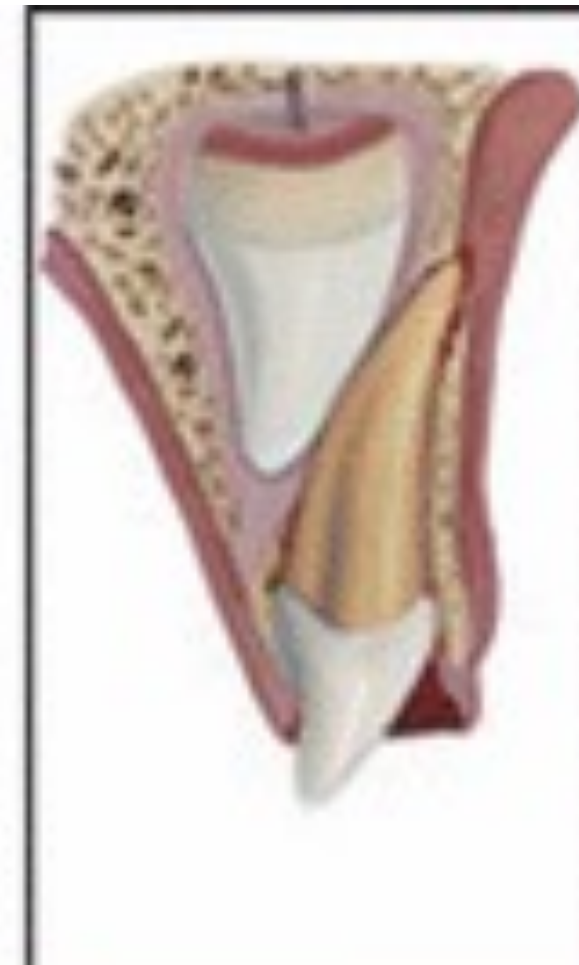
Subluxation



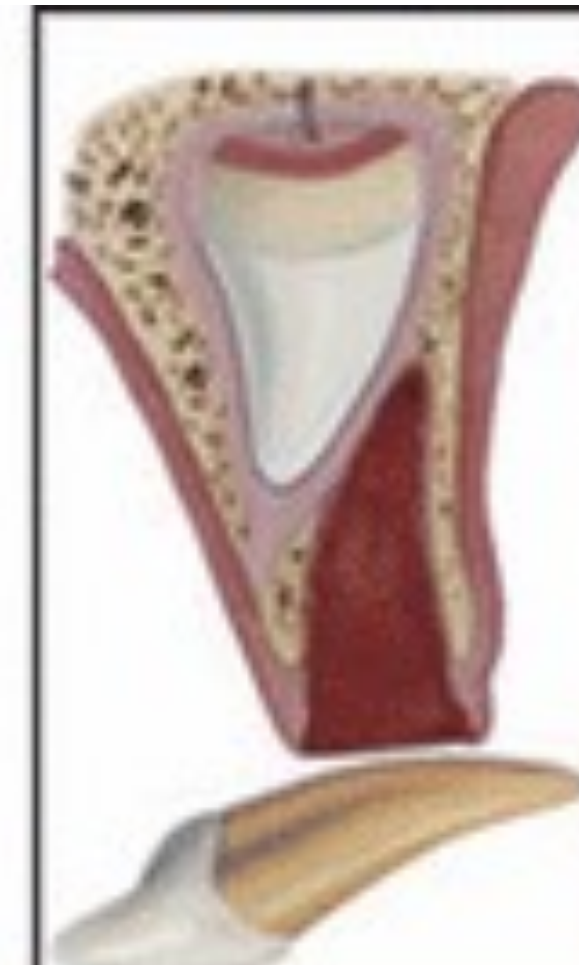
Extrusion



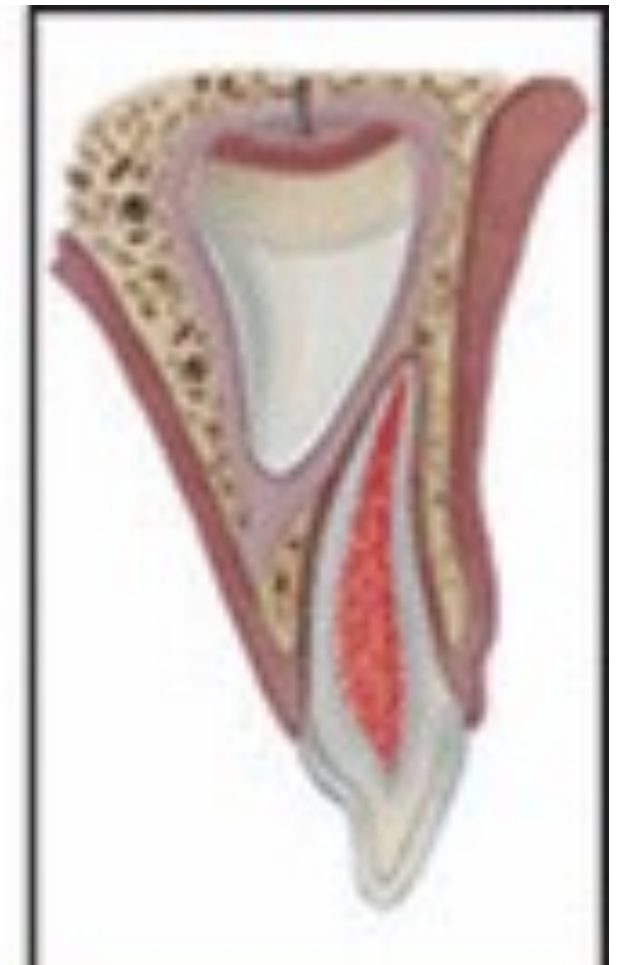
Lateral luxation



Intrusion



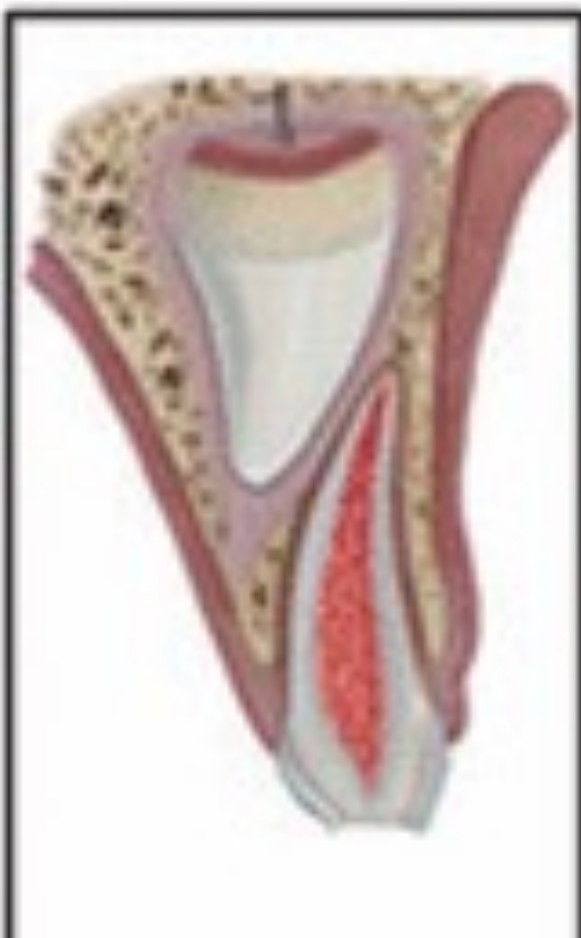
Avulsion



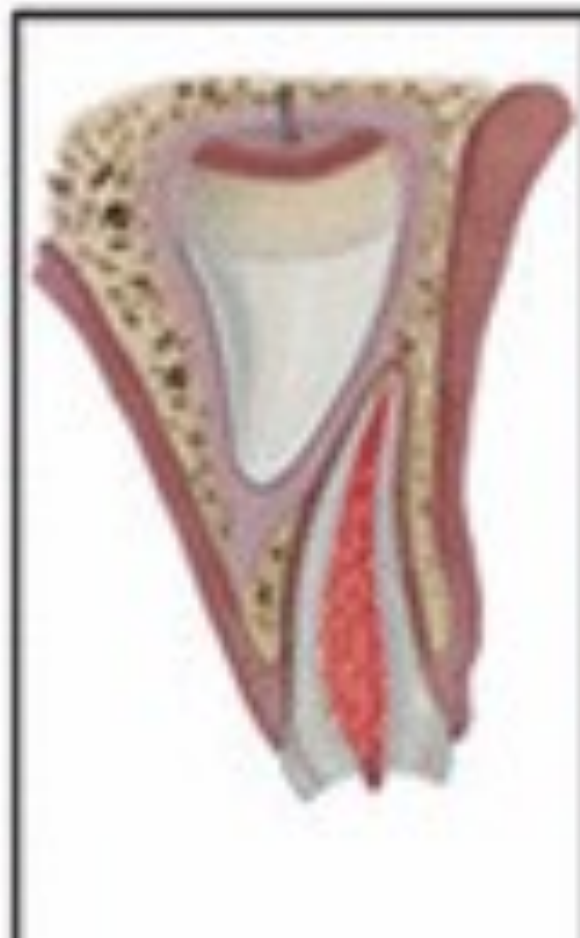
Infraction



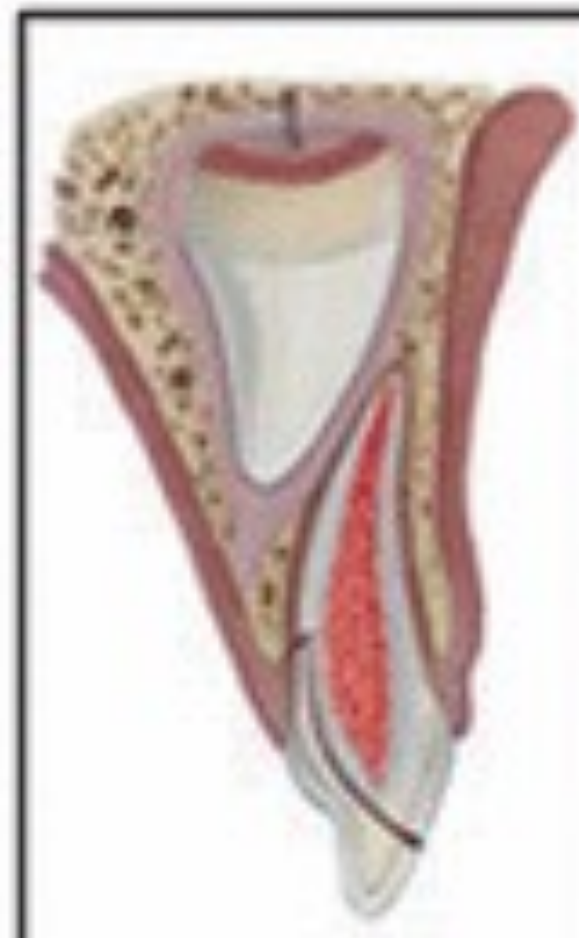
Enamel fracture



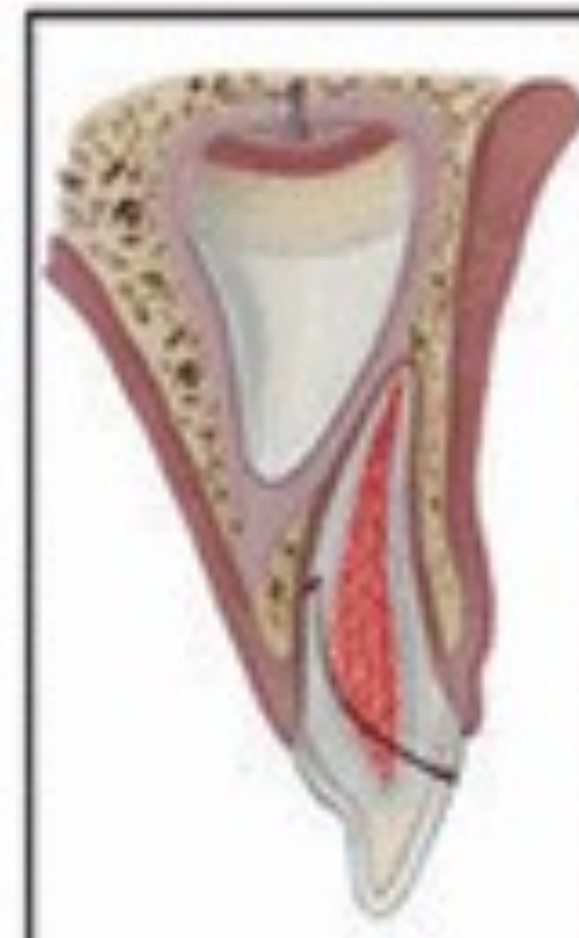
Enamel dentin fracture



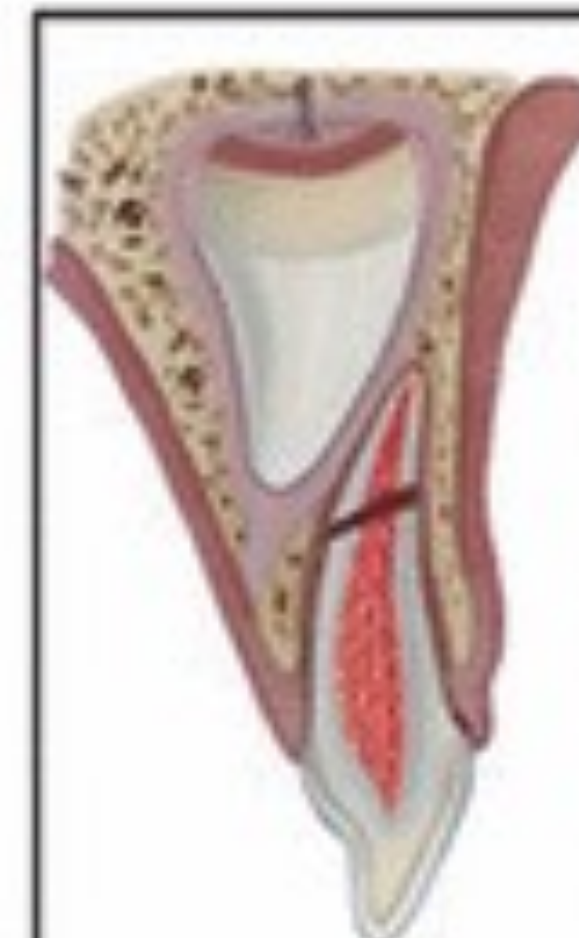
Enamel dentin pulp fracture



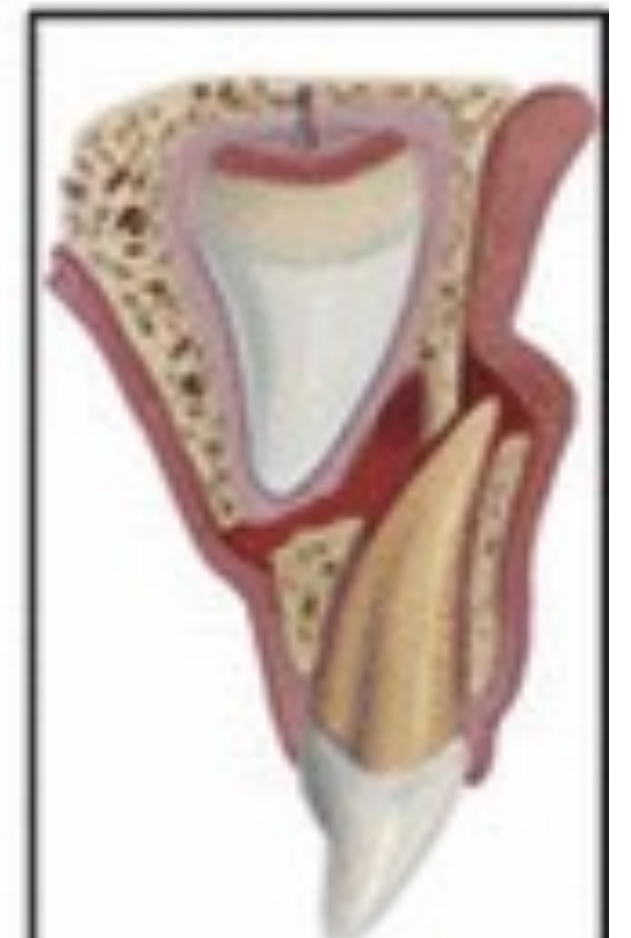
Crown-root fracture without pulp involvement



Crown-root fracture with pulp involvement



Root fracture



Alveolar fracture