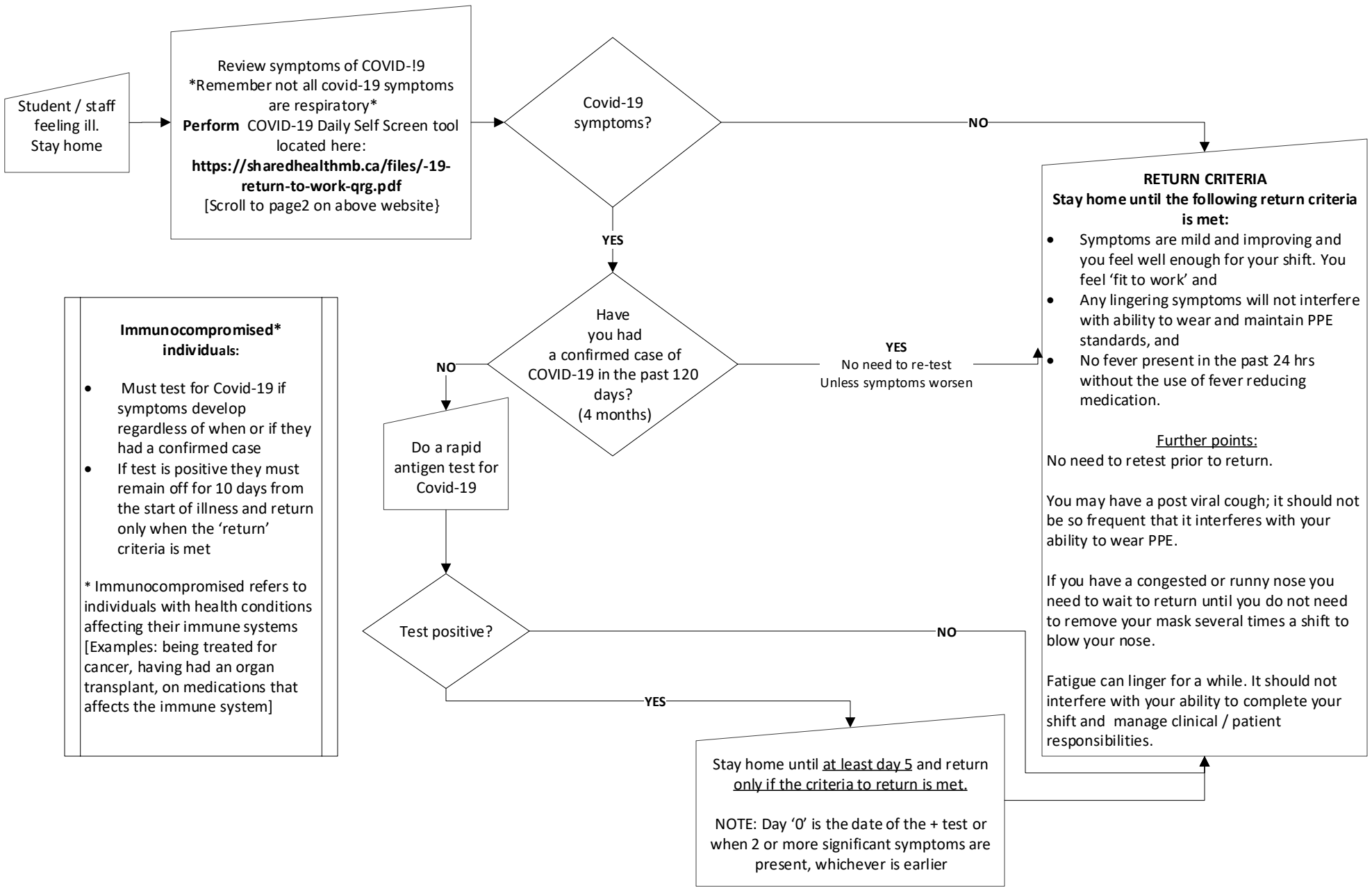


Covid-19 Decision flow chart for illness / Covid-19 considerations prior to attendance and return to clinical/ skills

Flow chart is based on the Shared Health guidelines posted in U. of M. Learn: Module 'COVID-19 College of Nursing'
<https://universityofmanitoba.desire2learn.com/d21/home/419730>

Students / staff no longer need to report to the NursingC19@umanitoba.ca email however this email will be available for consultation.



Immunocompromised* individuals:

- Must test for Covid-19 if symptoms develop regardless of when or if they had a confirmed case
- If test is positive they must remain off for 10 days from the start of illness and return only when the 'return' criteria is met

* Immunocompromised refers to individuals with health conditions affecting their immune systems [Examples: being treated for cancer, having had an organ transplant, on medications that affects the immune system]